

Access Management Primary Categories

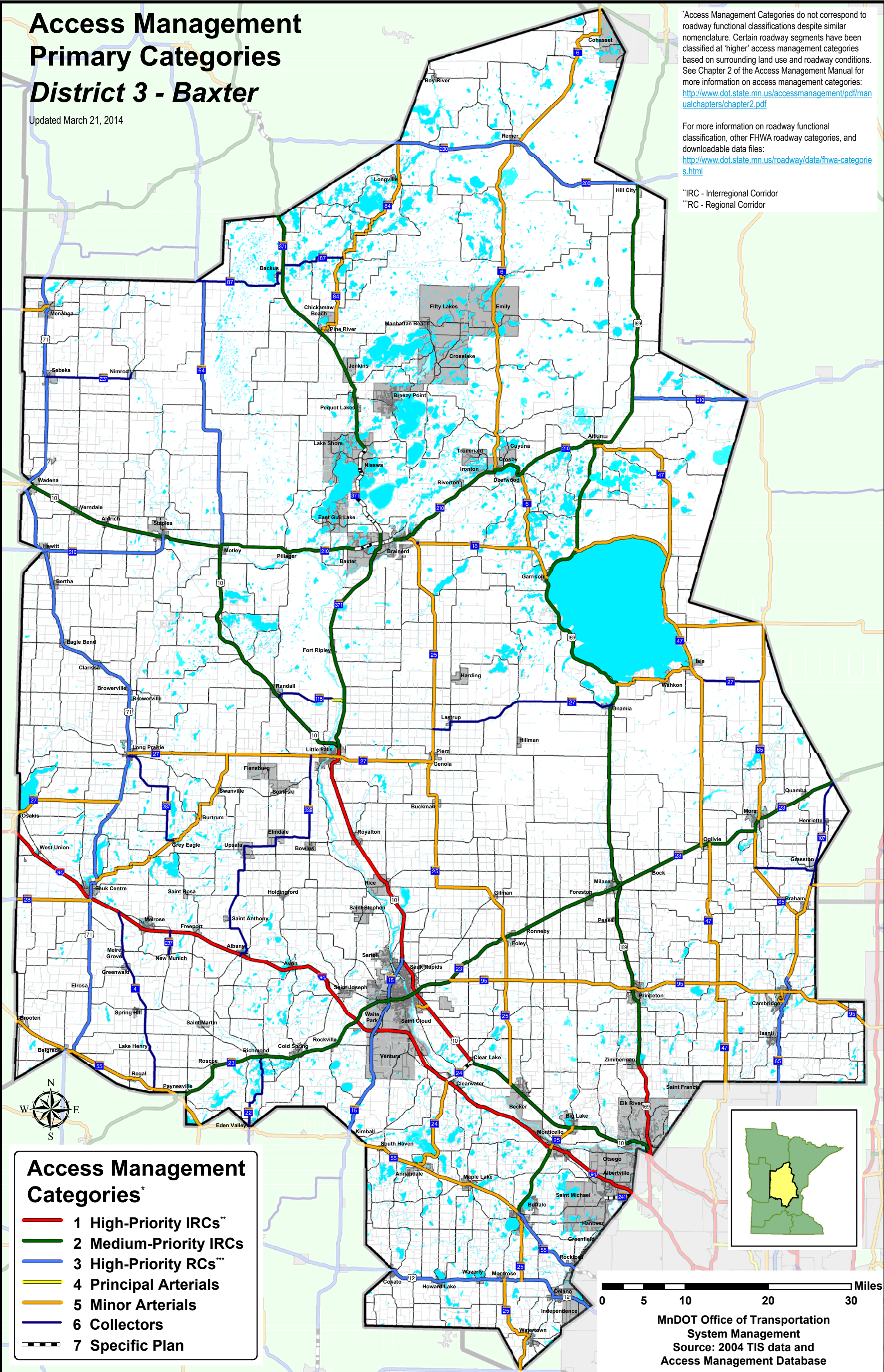
District 3 - Baxter

Updated March 21, 2014

*Access Management Categories do not correspond to roadway functional classifications despite similar nomenclature. Certain roadway segments have been classified at 'higher' access management categories based on surrounding land use and roadway conditions. See Chapter 2 of the Access Management Manual for more information on access management categories: <http://www.dot.state.mn.us/accessmanagement/pdf/manualchapters/chapter2.pdf>

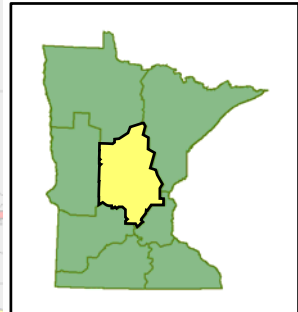
For more information on roadway functional classification, other FHWA roadway categories, and downloadable data files: <http://www.dot.state.mn.us/roadway/data/fhwa-categories.html>

**IRC - Interregional Corridor
***RC - Regional Corridor



Access Management Categories*

- 1 High-Priority IRCs**
- 2 Medium-Priority IRCs
- 3 High-Priority RCs***
- 4 Principal Arterials
- 5 Minor Arterials
- 6 Collectors
- 7 Specific Plan



MnDOT Office of Transportation System Management
Source: 2004 TIS data and Access Management Database