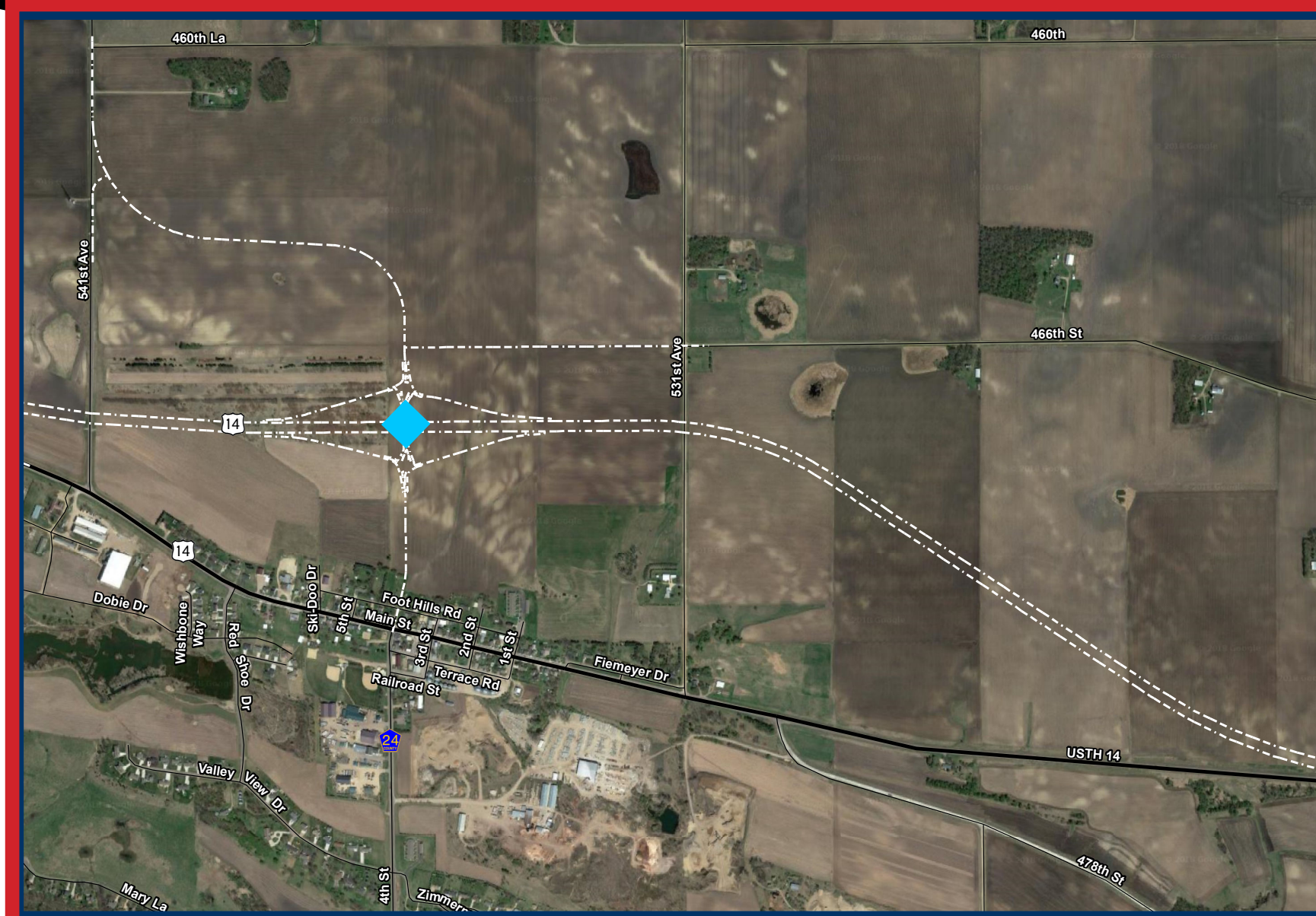
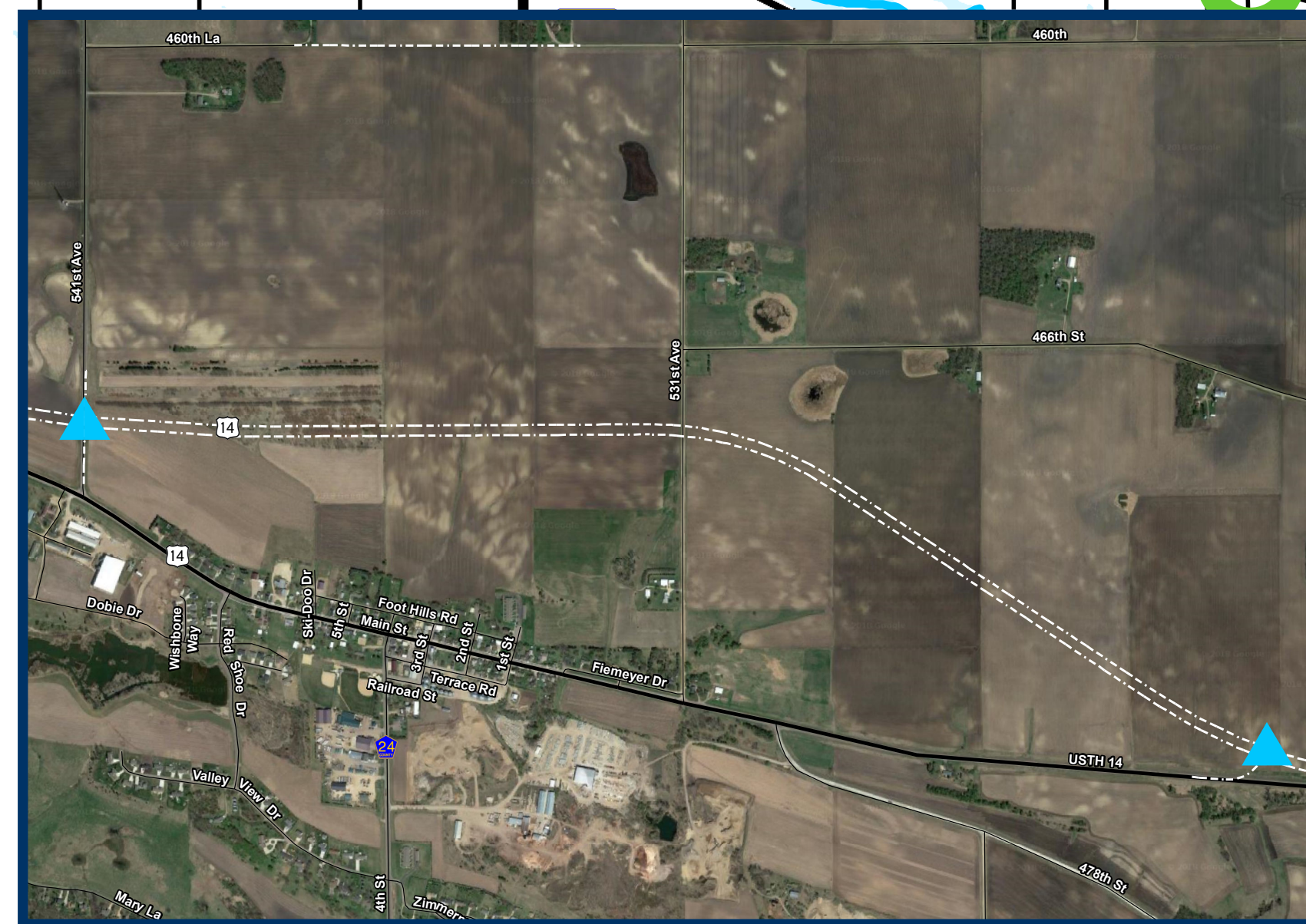
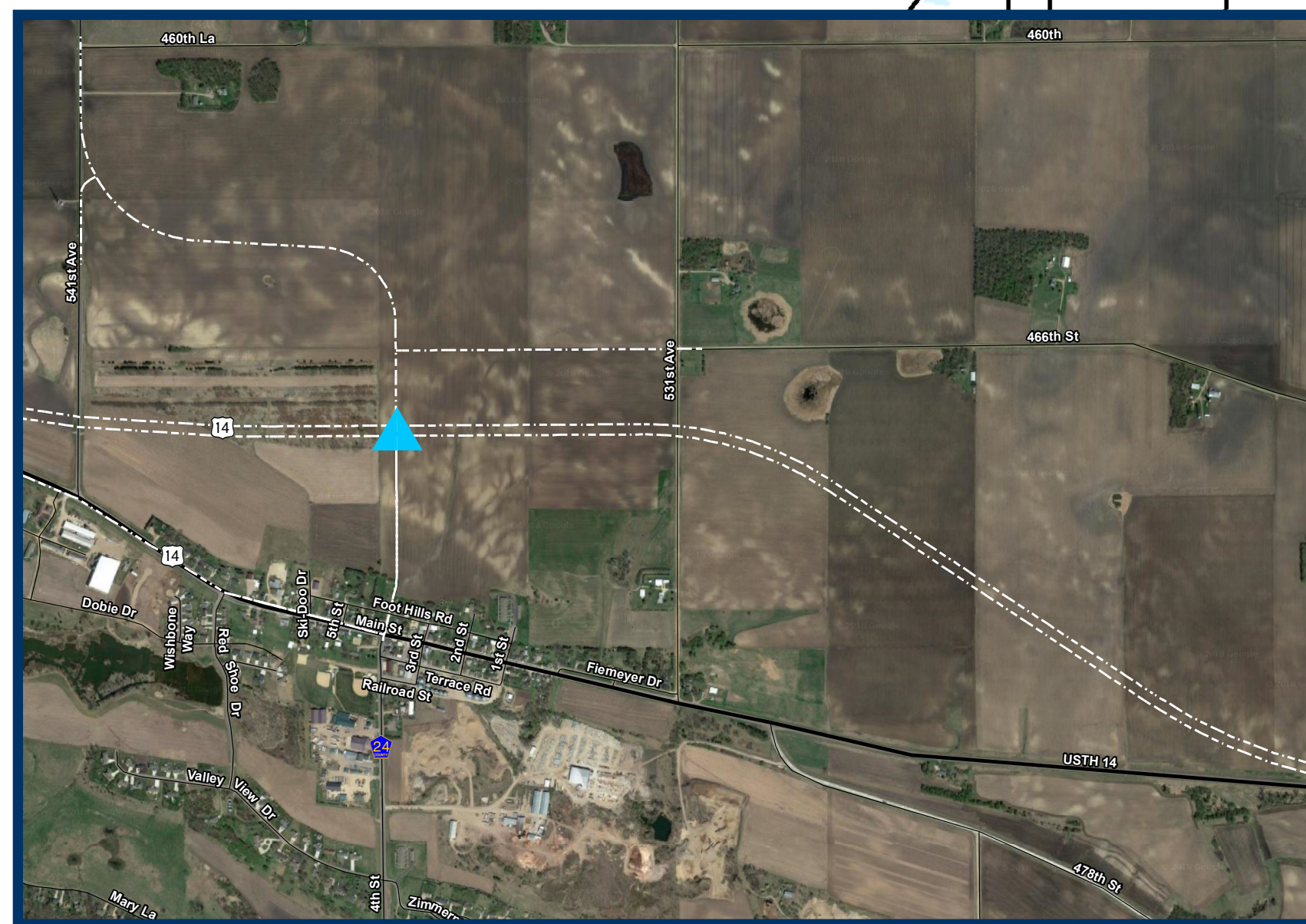
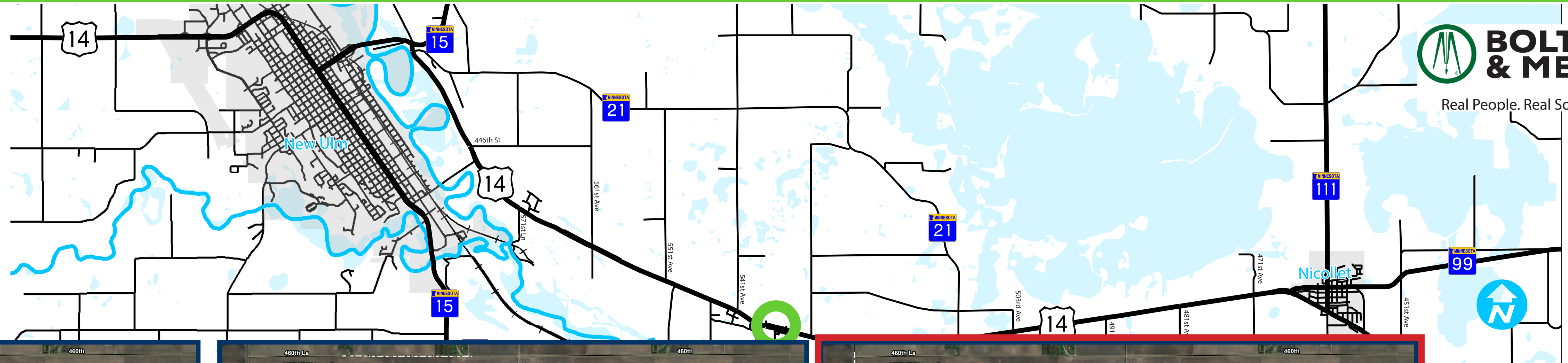




Courtland Evaluation

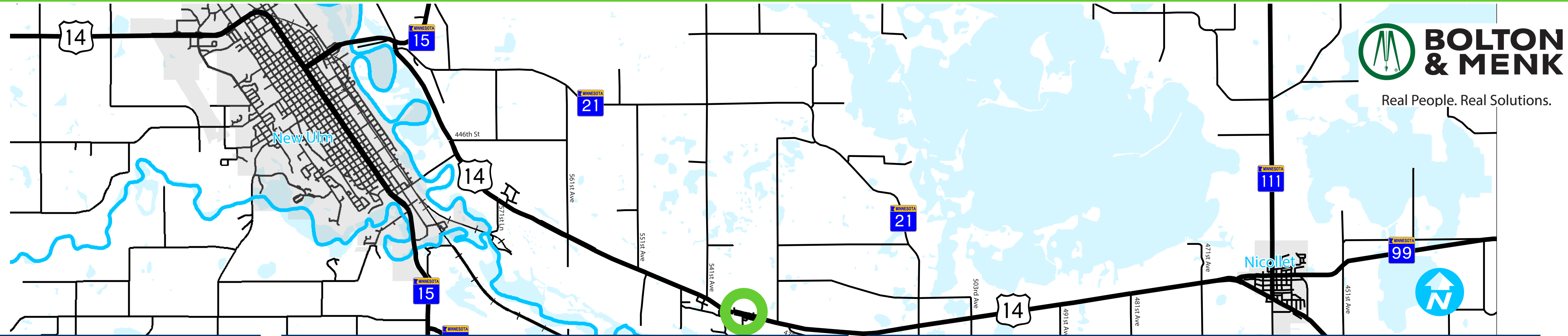


Legend

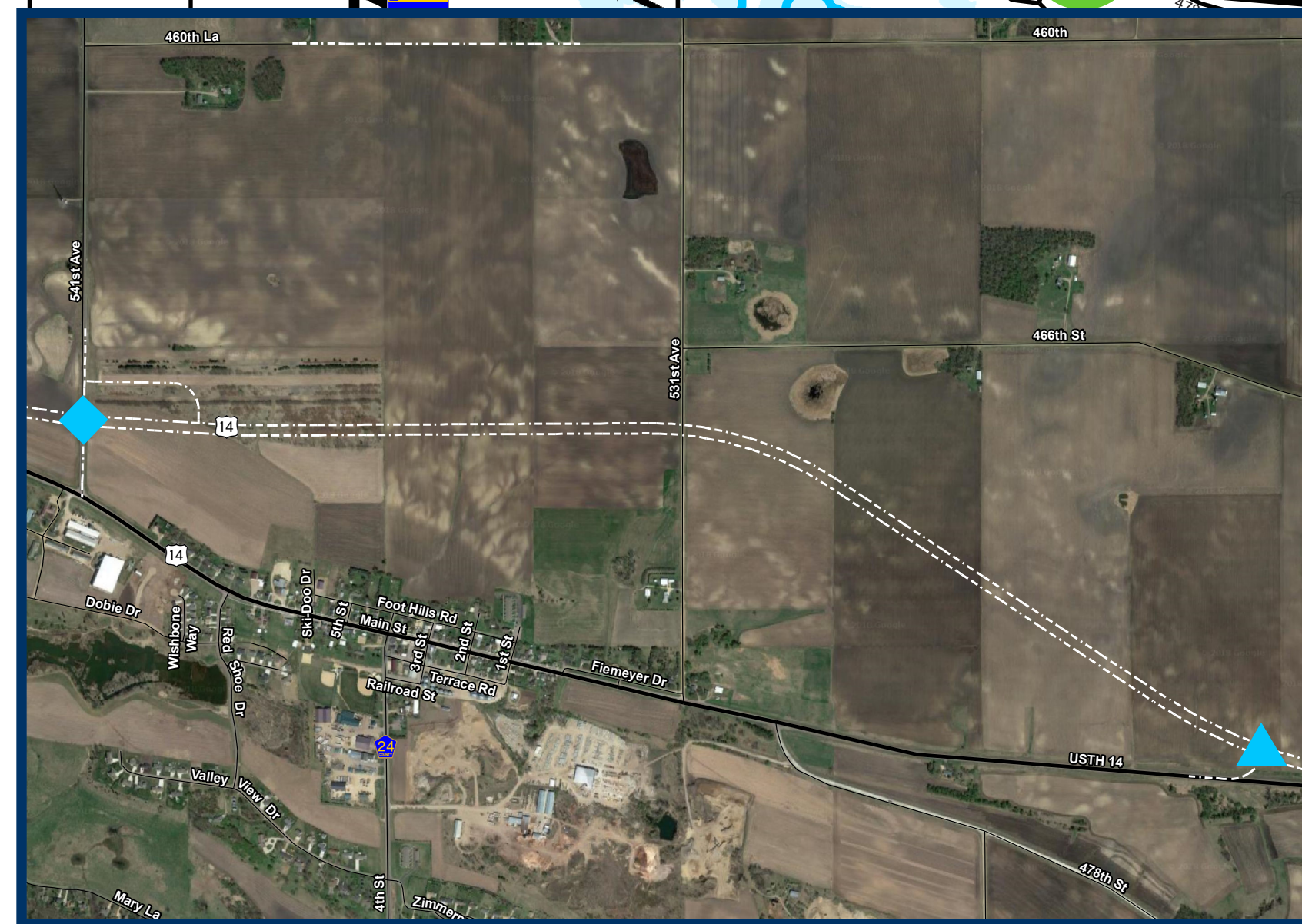
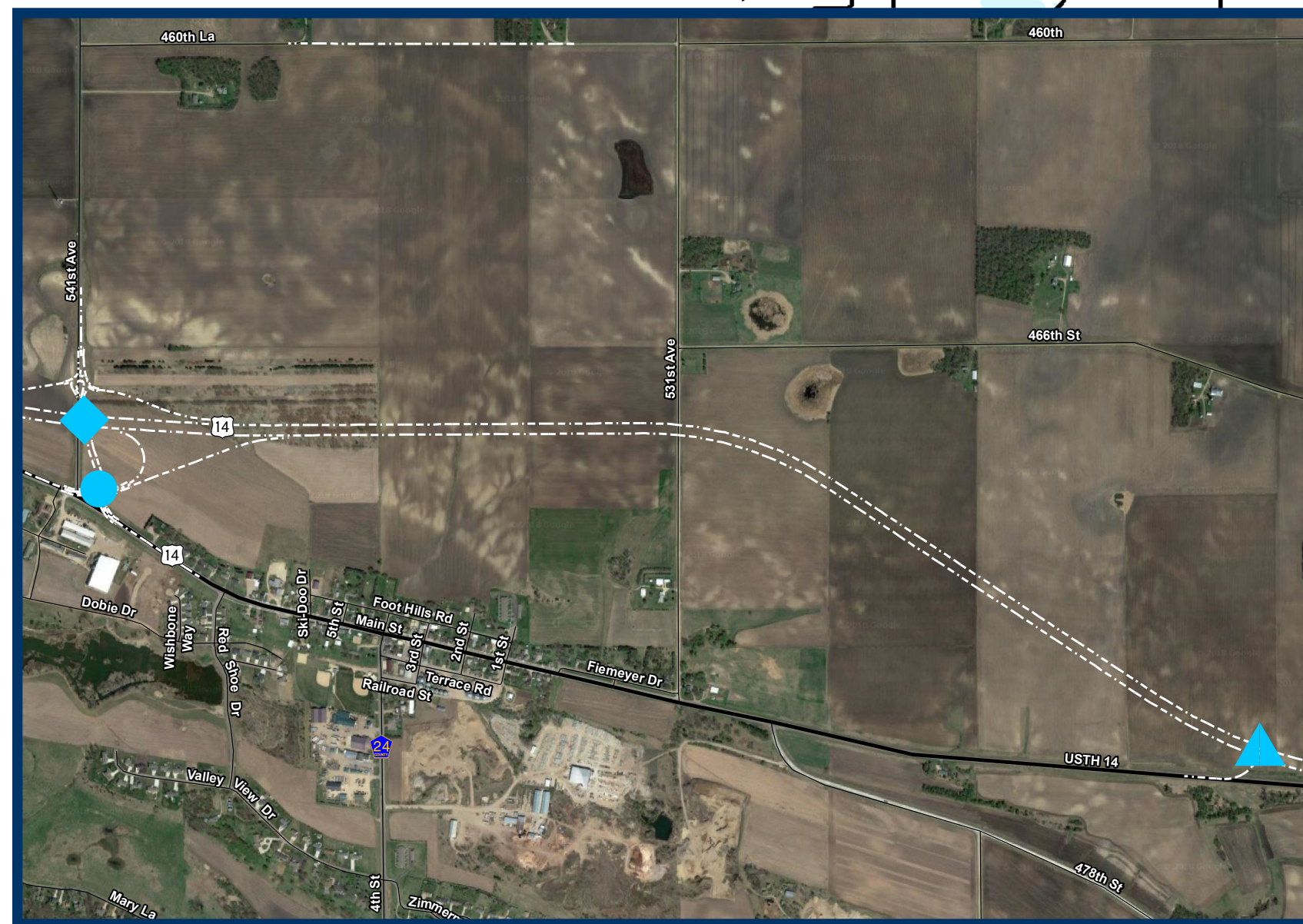
-  Interchange
-  RCUT (Restricting Crossing U-Turn)

Measures	Concept A			Concept B			Concept C			Key
	RCUT at CSAH 24			Two RCUTs (CSAH 12 and East End of Courtland)			Interchange at CSAH 24			
Safety	+++			+++			++++			
Delay	0			0			0			
Travel Time	+++			+++			+++			
Mobility	Anchor			Anchor			Anchor			
	West	Central	East	West	Central	East	West	Central	East	
To New Ulm	--	0	0	-	0	0	--	0	0	
To Mankato	0	0	--	+	0	0	0	0	--	
Cost	\$8,700,000 - \$11,600,000			\$6,800,000 - \$9,100,000			\$12,500,000 - \$16,500,000			2018 Dollars
Benefit/Cost	++++			++++			+++			
Total	10+/4-			11+/1-			10+/4-			

Courtland Evaluation



- Legend**
- ◆ Interchange
 - ▲ RCUT (Restricting Crossing U-Turn)
 - Roundabout



Measures	Concept E			Concept F			Key	
	Interchange at CSAH 12 and RCUT at East end of Courtland			Quadrant Interchange at CSAH 12 and RCUT at East end of Courtland				
Safety	+++			+++				
Delay	0			0				
Travel Time	+++			+++				
Mobility	Anchor	West	Central	East	West	Central	East	
	To New Ulm	-	0	0	-	0	0	
	To Mankato	+	0	0	+	0	0	
Cost	\$11,500,000 - \$15,300,000			\$10,100,000 - \$13,400,000			2018 Dollars	
Benefit/Cost	+++			+++				
Total	10+/1-			10+/1-				

Access to Anchors

- X New Ulm Access Point
- Y Mankato Access Point
- W West Anchor
- C Central Anchor
- E East Anchor