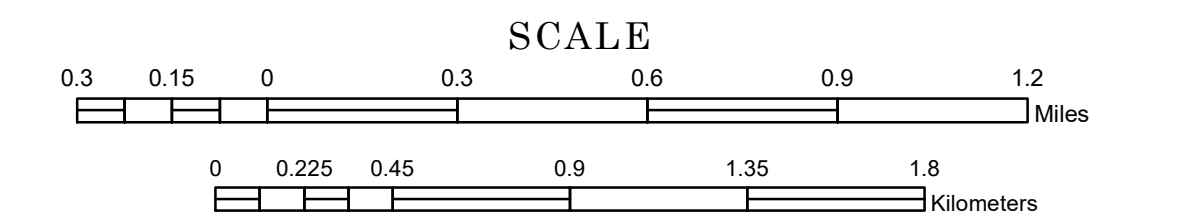


MUNICIPALITY OF CREDIT RIVER

PREPARED BY THE
MINNESOTA DEPARTMENT OF TRANSPORTATION
OFFICE OF TRANSPORTATION SYSTEM MANAGEMENT

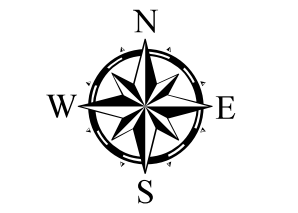
IN COOPERATION WITH
U.S. DEPARTMENT OF TRANSPORTATION
FEDERAL HIGHWAY ADMINISTRATION



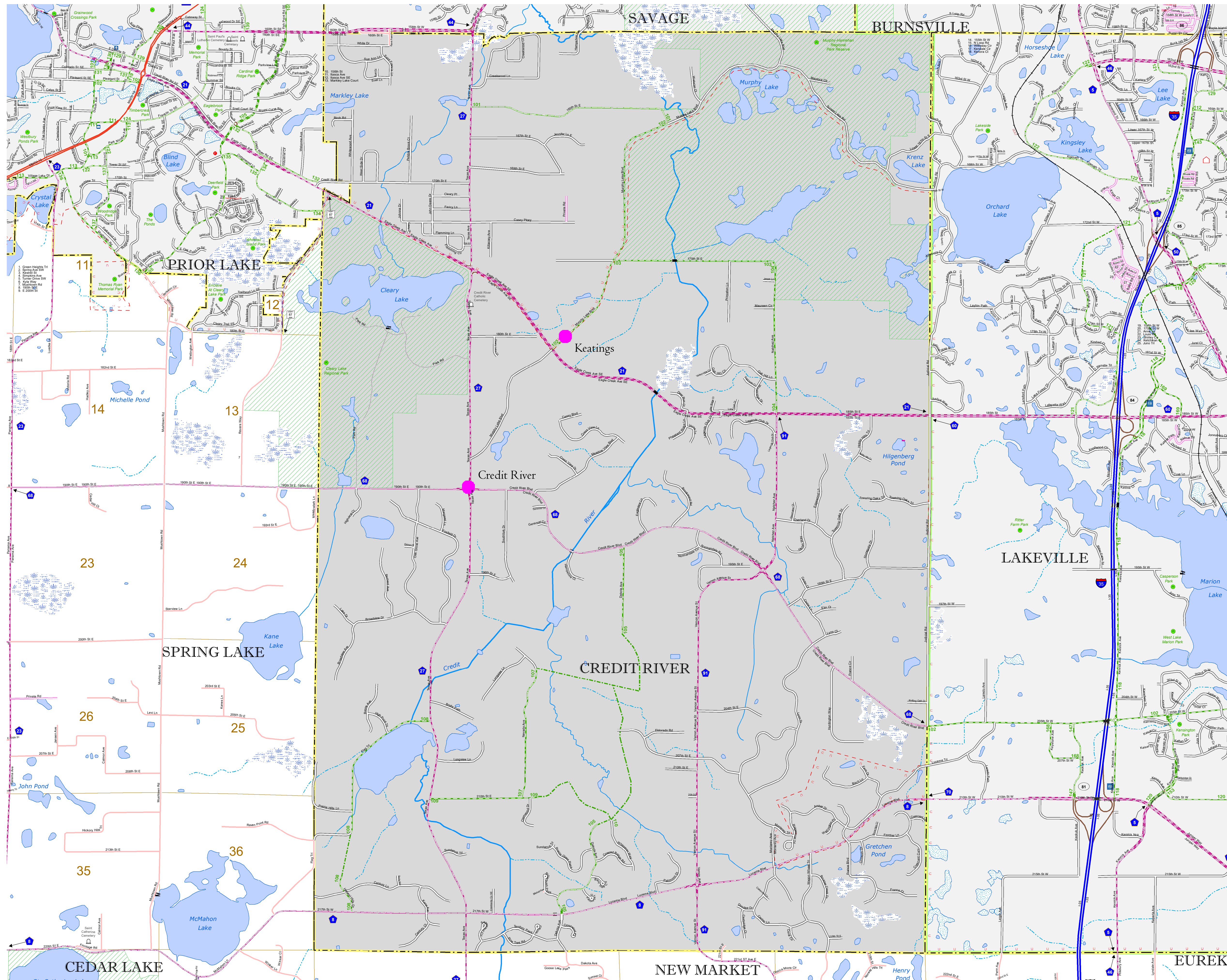
1 in = 1,600 ft

2023

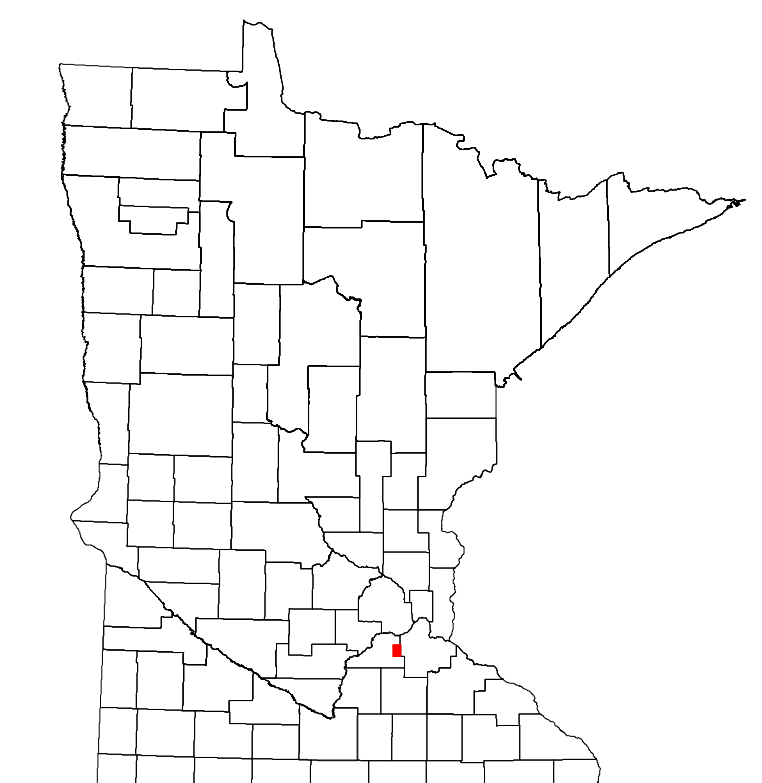
Projection:
Transverse Mercator
NAD 1986
UTM Zone 15



North American Datum
of 1986



ROAD AND ROADWAY FEATURES	PUBLIC SERVICE FEATURES
INTERSTATE	MINIOT OFFICE
US HIGHWAY	MINIOT TRUCK STATION
MIN HIGHWAY	HIGHWAY PATROL DISTRICT OFFICE
COUNTY STATE AID HIGHWAY	STATE TRAVEL INFORMATION CENTER
COUNTY ROAD	REST AREA (FULL SERVICE)
MUNICIPAL STREET	REST AREA (VAULT TRAILS)
MUNICIPAL STATE AID STREET	WAYSIDE (VAULT OR PIT TOL)
PRIVATE STREET/ROAD	PUBLIC ACCESS POINT
TOWNSHIP ROAD	LOCAL PARK
UNORGANIZED TERRITORY ROAD	FAIRGROUNDS
RAMP OR CONNECTOR	POINT OF ENTRY
INTERSTATE EXIT	PARK AND RIDE LOT
GREAT RIVER ROAD	PUBLIC UNIVERSITY/COLLEGE
OTHER ROAD	PRIVATE UNIVERSITY/COLLEGE
<ul style="list-style-type: none"> Freeway: State Park, National Rural Service: National Park, Monument, State Capital Military: National Forest, National Wildlife, State Game 	ELEMENTARY SCHOOL
RAILROAD AND RAILWAY FEATURES	MIDDLE SCHOOL
RAILWAY	HIGH SCHOOL
EMPIRE BUILDER STATION (AMTRAK)	AVIATION FEATURES
NORTHSTAR STATION (COMMUTER)	COMMERCIAL AIRPORT
LIGHT RAIL	GENERAL AIRPORT
BLUE LINE STATION	AIRSTRIP
GREEN LINE STATION	SEAPLANE
INFRASTRUCTURE FEATURES	AIRPORT RUNWAY
LONG BRIDGE (100' OR GREATER SPAN)	CULTURAL FEATURES
MAJOR BRIDGE (20' TO 100' SPAN)	STATE HISTORICAL MARKER
MINOR BRIDGE (5' TO 20' SPAN)	HISTORIC SITE
ROAD TUNNEL (100' OR GREATER SPAN)	MONUMENT
RAILROAD BRIDGE (100' OR GREATER SPAN)	CEMETERY
RAILROAD BRIDGE (UNDER 100' SPAN)	BOUNDARY FEATURES
BOATWAY	TRIBAL LAND
PEDESTRIAN BRIDGE	COUNTY
PEDESTRIAN TUNNEL	MUNICIPALITY
DAM	ADJACENT MUNICIPALITY
LOCK AND DAM	FEDERAL ADJUSTED URBAN AREA (2014)
PUBLIC FACILITIES	MILITARY
FEDERAL CAPITOL	STATE PARK
FEDERAL COURTHOUSE	REGIONAL PARK
COUNTY COURTHOUSE	NATIONAL FOREST
ARMORY	NATIONAL AND STATE FOREST
CITY HALL	STATE FOREST
TOWN HALL	NATIONAL TRAIL
COMALUNITY CENTER	STATE FOREST
ARENA	NATIONAL TRAIL
STADIUM	WILDLIFE REFUGUE AREA
POST OFFICE	WILDLIFE MANAGEMENT AREA
POLICE STATION	HYDROLOGIC FEATURES
FIRE STATION	RIVER OR STREAM (PERENNIAL)
PUBLIC LIBRARY	LAKE, POND OR RESERVOIR
PUBLIC MUSEUM	STREAM (INTERMITTENT)
EVENT CENTER	DRAINAGE DITCH
CITY CENTERS	WETLAND
TRIBAL GOVERNMENT CENTER	ISLAND OR LAND
CITY CENTER	REGIONAL WATERSHED
LOCALLY KNOWN PLACE	
UNINCORPORATED COMMUNITY	



Population (U.S. Census 2020):

To request information from this document in an alternative format, call 651-366-4718 or 1-800-657-3774 (Greater Minnesota); 711 or 1-800-627-3529 (Minnesota Relay). You may also send an e-mail to ADarequest.dot@state.mn.us. (Please request at least one week in advance.)

LAST EDITED ON 1-29-2024