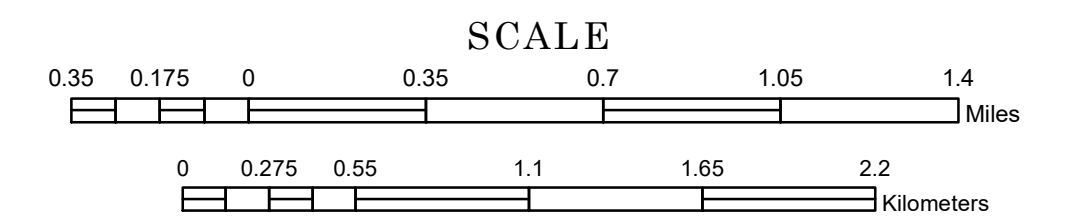


MUNICIPALITY OF EAST BETHEL

PREPARED BY THE
MINNESOTA DEPARTMENT OF TRANSPORTATION
OFFICE OF TRANSPORTATION SYSTEM MANAGEMENT

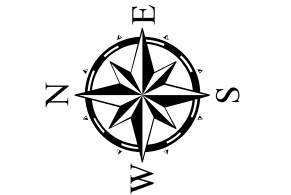
IN COOPERATION WITH
U.S. DEPARTMENT OF TRANSPORTATION
FEDERAL HIGHWAY ADMINISTRATION



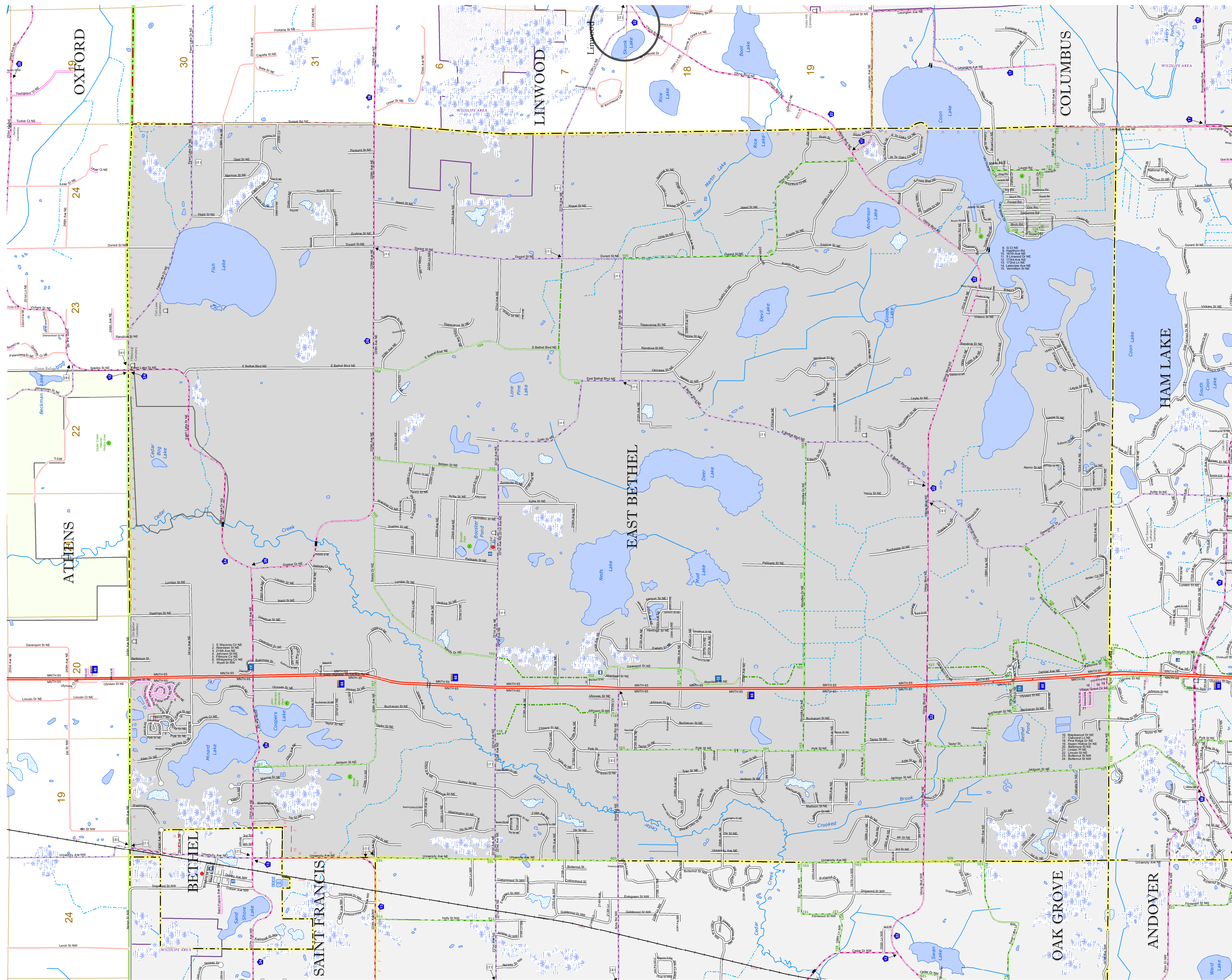
1 in = 2,000 ft

2023

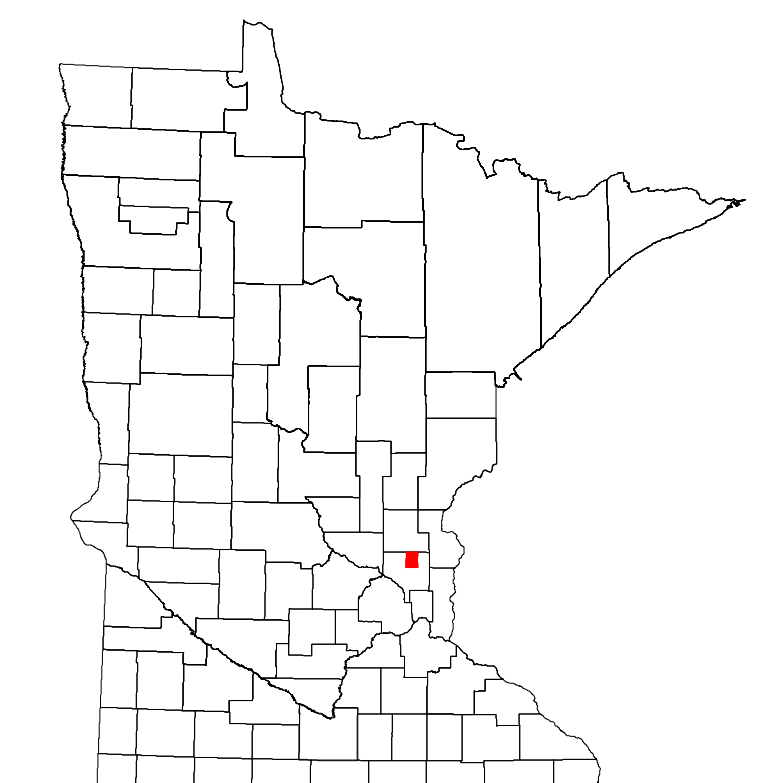
Projection:
Transverse Mercator
NAD 1986
UTM Zone 15



North American Datum
of 1986



ROAD AND ROADWAY FEATURES	PUBLIC SERVICE FEATURES
INTERSTATE	MINOT OFFICE
US HIGHWAY	MINOT TRUCK STATION
MIN HIGHWAY	HIGHWAY PATROL DISTRICT OFFICE
COUNTY STATE AID HIGHWAY	STATE TRAVEL INFORMATION CENTER
COUNTY ROAD	REST AREA (FULL SERVICE)
MUNICIPAL STREET	REST AREA (VAULT TRAILS)
MUNICIPAL STATE AID STREET	WAYSIDE (VAULT OR PIT TOLLS)
PRIVATE STREET/ROAD	PUBLIC ACCESS POINT
TOWNSHIP ROAD	LOCAL PARK
UNORGANIZED TERRITORY ROAD	FAIRGROUNDS
RAMP OR CONNECTOR	PORT OF ENTRY
INTERSTATE EXIT	PARK AND RIDE LOT
GREAT RIVER ROAD	PUBLIC UNIVERSITY/COLLEGE
OTHER ROAD	PRIVATE UNIVERSITY/COLLEGE
FRONTAGE	MIDDLE SCHOOL
STATE PARK	HIGH SCHOOL
NATIONAL PARK	
NATIONAL MONUMENT	
NATIONAL FOREST	
NATIONAL WILDLIFE	
STATE GAME	
RAILROAD AND RAILWAY FEATURES	AVIATION FEATURES
EMPIRE BUILDER STATION (AMTRAK)	COMMERCIAL AIRPORT
NORTHSTAR STATION (COMMUTER)	GENERAL AIRPORT
LIGHT RAIL	AIRSTRIP
BLUE LINE STATION	SEAPLANE
GREEN LINE STATION	AIRPORT RUNWAY
INFRASTRUCTURE FEATURES	CULTURAL FEATURES
LONG BRIDGE (100' OR GREATER SPAN)	STATE HISTORICAL MARKER
MAJOR BRIDGE (20' TO 100' SPAN)	HISTORIC DISTRICT
MINOR BRIDGE (5' TO 20' SPAN)	HISTORIC SITE
ROAD TUNNEL (100' OR GREATER SPAN)	MONUMENT
RAILROAD BRIDGE (100' OR GREATER SPAN)	CEMETERY
RAILROAD BRIDGE (UNDER 100' SPAN)	
BOATWAY	
PEDESTRIAN BRIDGE	
PEDESTRIAN TUNNEL	
DAM	
LOCK AND DAM	
PUBLIC FACILITIES	BOUNDARY FEATURES
STATE CAPITOL	TRIBAL LAND
FEDERAL COURTHOUSE	COUNTY
COUNTY COURTHOUSE	MUNICIPALITY
CITY HALL	ADJACENT MUNICIPALITY
TOWN HALL	FEDERAL ADJUSTED URBAN AREA (2014)
COUNTY CENTER	MILITARY
ARENA	STATE PARK
STADIUM	REGIONAL PARK
FIRE STATION	NATIONAL FOREST
PUBLIC LIBRARY	NATIONAL AND STATE FOREST
PUBLIC MUSEUM	STATE FOREST
EVENT CENTER	NATIONAL TRAIL
	WILDLIFE REFUGE AREA
	WILDLIFE MANAGEMENT AREA
CITY CENTERS	HYDROLOGIC FEATURES
TRIBAL GOVERNMENT CENTER	RIVER OR STREAM (PERMANENT)
CITY CENTER	LAKE, POND OR RESERVOIR
LOCALLY KNOWN PLACE	STREAM (NONPERMANENT)
UNINCORPORATED COMMUNITY	PUBLIC DITCH
	WETLAND
	ISLAND OR LAND
	REGIONAL WATERSHED



Population (U.S. Census 2020): 11,786

To request information from this document in an alternative format, call 651-366-4718 or 1-800-657-3774 (Greater Minnesota); 711 or 1-800-627-3529 (Minnesota Relay). You may also send an e-mail to ADArequest.dot@state.mn.us. (Please request at least one week in advance.)

LAST EDITED ON 1-29-2024