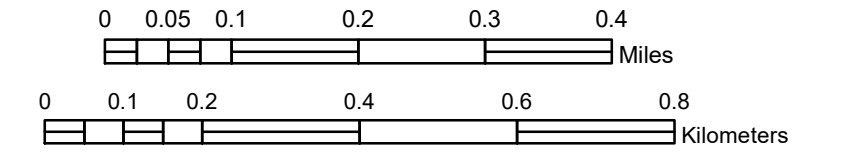


MUNICIPALITY OF MINNEAPOLIS

PREPARED BY THE
MINNESOTA DEPARTMENT OF TRANSPORTATION
OFFICE OF TRANSPORTATION SYSTEM MANAGEMENT

IN COOPERATION WITH
U.S. DEPARTMENT OF TRANSPORTATION
FEDERAL HIGHWAY ADMINISTRATION

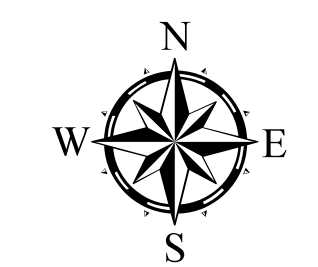
SCALE



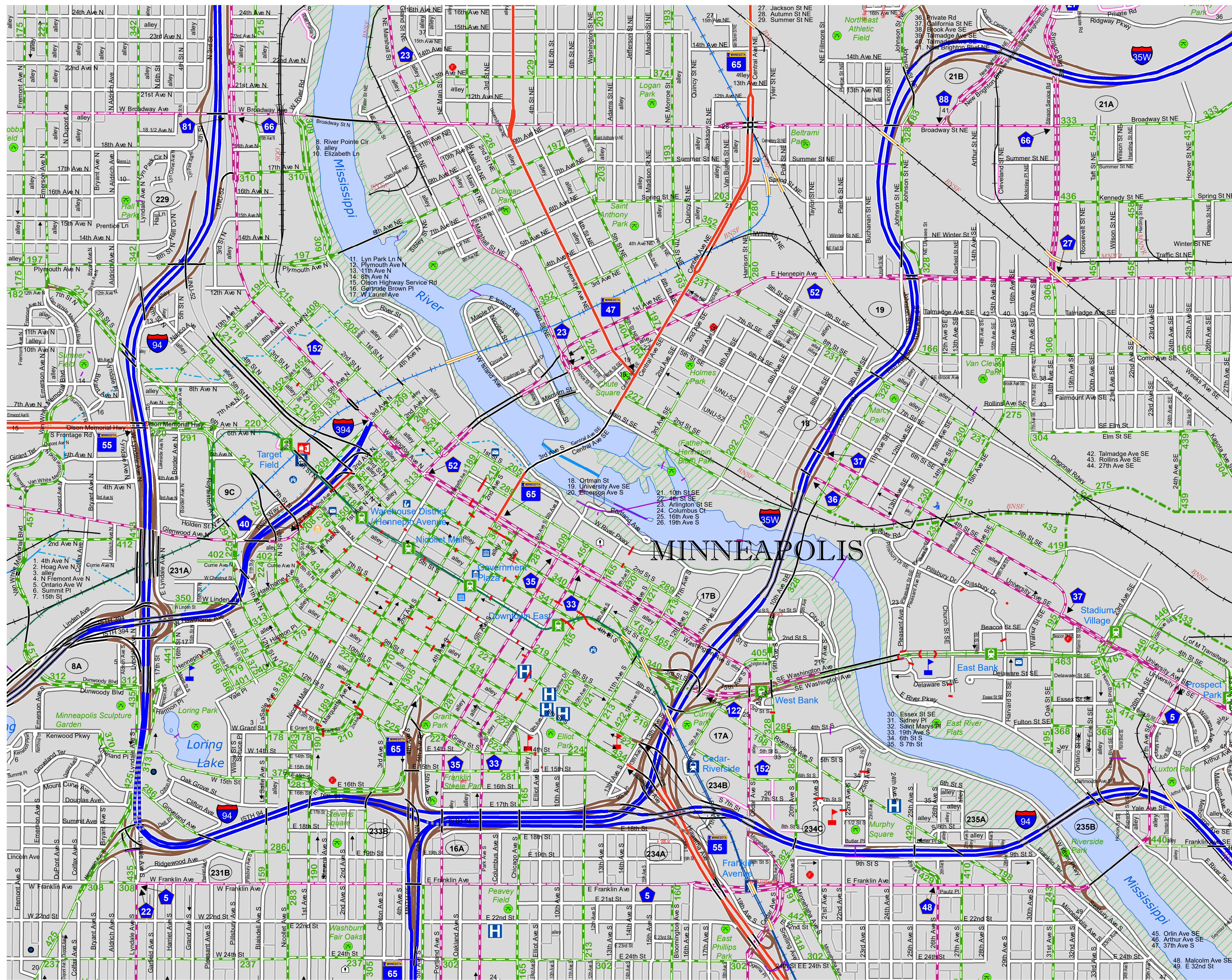
1 in = 800 ft

2023

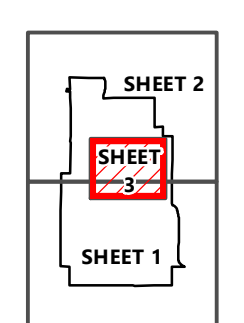
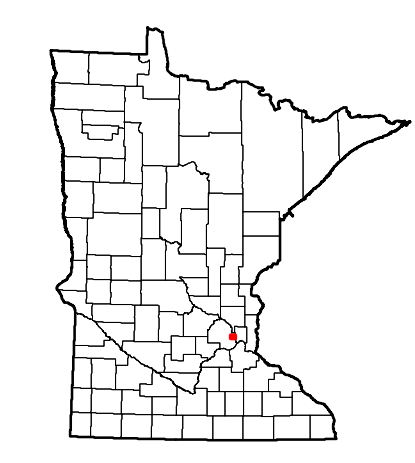
Projection:
Transverse Mercator
NAD 1986
UTM Zone 15



North American Datum
of 1986



ROAD AND ROADWAY FEATURES	PUBLIC SERVICE FEATURES
INTERSTATE	MNDOT OFFICE
US HIGHWAY	MNDOT TRUCK STATION
COUNTY STATE AID HIGHWAY	HIGHWAY PATROL DISTRICT OFFICE
COUNTY ROAD	STATE TRAVEL INFORMATION CENTER
MUNICIPAL STREET	REST AREA (ALL SERVICES)
MUNICIPAL STATE AID STREET	REST AREA (WALK OR BIKE TRAIL)
TOWNSHIP ROAD	PUBLIC ACCESS POINT
UNORGANIZED TERRITORY ROAD	LOCAL PARK
RAMP OR CONNECTOR	PARKBOULEVARD
GREAT RIVER ROAD	PARK AND RIDE LOT
INTERSTATE EXIT	PUBLIC UNIVERSITY COLLEGE
PRIVATE STREET ROAD	PRIVATE UNIVERSITY COLLEGE
RAILROAD AND RAILWAY FEATURES	ELMENTARY SCHOOL
EMPIRE BUILDER STATION (AIRRAIL)	MIDDLE SCHOOL
NORTH STAR STATION (COMPUTER)	HIGH SCHOOL
LIGHT RAIL	AVIATION FEATURES
BLUE LINE STATION	COMMERCIAL AIRPORT
GREEN LINE STATION	GENERAL AIRPORT
INFRASTRUCTURE FEATURES	AIRSTRIP
LONGS BRIDGE (100' OR GREATER SPAN)	SEAPLANE
MAJOR BRIDGE (20' TO 100' SPAN)	AIRPORT RAILWAY
MINOR BRIDGE (0' TO 20' SPAN)	CULTURAL FEATURES
ROAD TUNNEL (100' OR GREATER SPAN)	STATE HISTORICAL MARKER
RAILROAD BRIDGE (UNDER 100' SPAN)	HISTORIC DISTRICT
SKYWAY	HISTORIC SITE
PEDESTRIAN BRIDGE	MONUMENT
PEDESTRIAN TUNNEL	CEMETERY
LOCK AND DAM	BOUNDARY FEATURES
STATE CAPITAL	TRIBAL LAND
FEDERAL COURTHOUSE	COUNTY
CITY HALL	MUNICIPALITY
REGIONAL PARK	ADJACENT MUNICIPALITY
NATIONAL FOREST	FEDERAL ADJUSTED URBAN AREA (FAUA)
TOWN HALL	MILITARY
COMMUNITY CENTER	STATE PARK
ARENA	REGIONAL PARK
STADIUM	NATIONAL FOREST
POST OFFICE	NATIONAL AND STATE FOREST
POLICE STATION	STATE FOREST
FIRE STATION	NATIONAL TRAIL
PUBLIC LIBRARY	WILDLIFE REFUGE AREA
PUBLIC MUSEUM	WILDLIFE MANAGEMENT AREA
EVENT CENTER	HYDROLOGIC FEATURES
CITY CENTER	LAKE, POND, OR RESERVOIR
LOCALLY INCORPORATED PLACE	STREAM (INTERMITTENT)
UNINCORPORATED COMMUNITY	DRAINAGE DITCH
	WETLAND
	ISLAND OR LAND
	REGIONAL WATERSHED



To request information from this document in an alternative format, call 651-366-4718 or 1-800-657-3774 (Greater Minnesota); 711 or 1-800-627-3529 (Minnesota Relay). You may also send an e-mail to ADRequest.dot@state.mn.us. (Please request at least one week in advance.)

LAST EDITED ON 1-07-2023

Population (U.S. Census 2020): 429,954