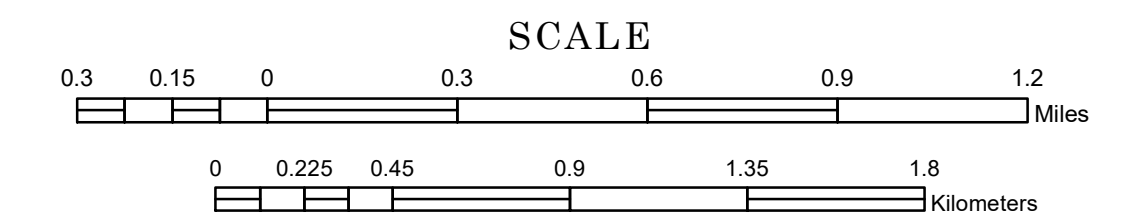


# MUNICIPALITY OF VIRGINIA

PREPARED BY THE  
MINNESOTA DEPARTMENT OF TRANSPORTATION  
OFFICE OF TRANSPORTATION SYSTEM MANAGEMENT

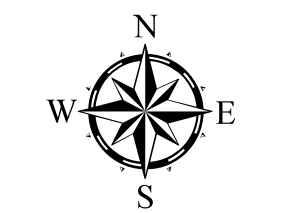
IN COOPERATION WITH  
U.S. DEPARTMENT OF TRANSPORTATION  
FEDERAL HIGHWAY ADMINISTRATION



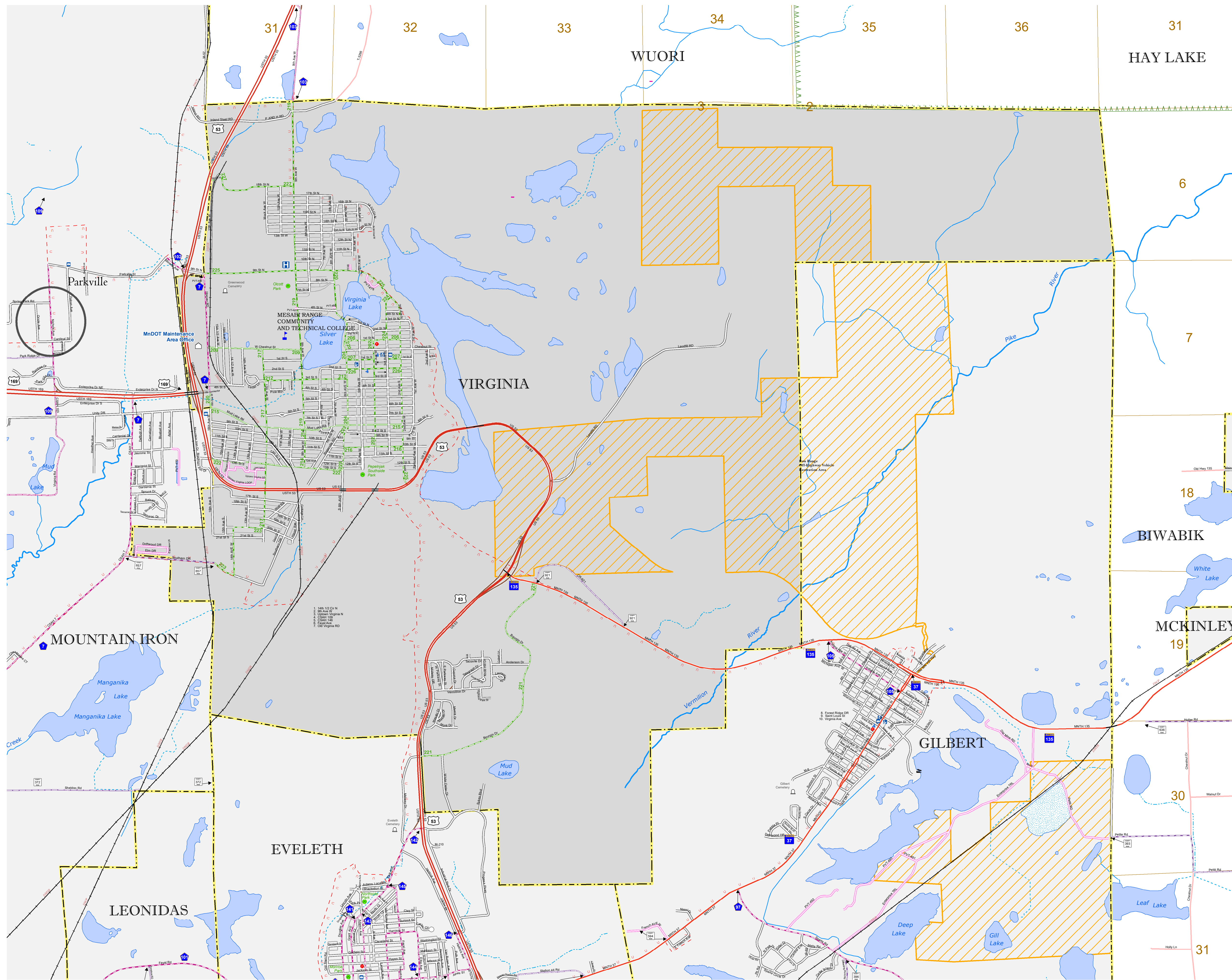
1 in = 1,600 ft

2023

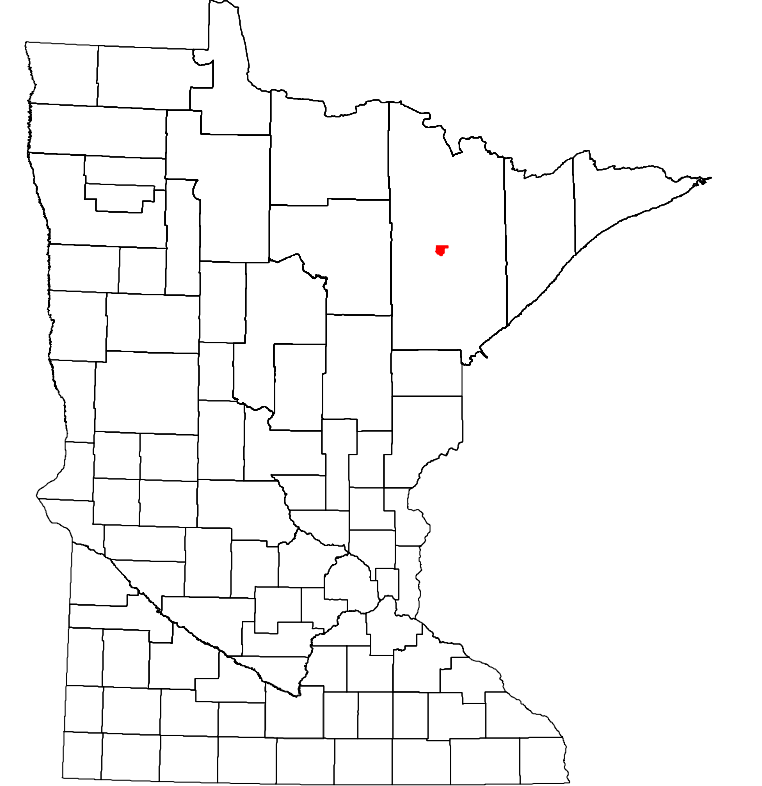
Projection:  
Transverse Mercator  
NAD 1986  
UTM Zone 15



North American Datum  
of 1986



ROAD AND ROADWAY FEATURES	PUBLIC SERVICE FEATURES
INTERSTATE	MNDOT OFFICE
US HIGHWAY	MNDOT TRUCK STATION
MN HIGHWAY	HIGHWAY PATROL DISTRICT OFFICE
COUNTY STATE AID HIGHWAY	STATE TRAVEL INFORMATION CENTER
COUNTY ROAD	REST AREA (PUL SERVICES)
MUNICIPAL STREET	REST AREA (VAULT TRAILS)
MUNICIPAL STATE AID STREET	WAYSIDE (VAULT OR PIT TRAIL)
PRIVATE STREET/ROAD	PUBLIC ACCESS POINT
TOWNSHIP ROAD	LOCAL PARK
UNORGANIZED TERRITORY ROAD	FAIRGROUNDS
RAMP OR CONNECTOR	PORT OF ENTRY
INTERSTATE EXIT	PARK AND RIDE LOT
GREAT RIVER ROAD	PUBLIC UNIVERSITY/COLLEGE
OTHER ROAD	PRIVATE UNIVERSITY/COLLEGE
FRONTAGE	ELEMENTARY SCHOOL
NATIONAL SERVICE	MIDDLE SCHOOL
MUNICIPAL	HIGH SCHOOL
NATIONAL FOREST	AVIATION FEATURES
NATIONAL WILDLIFE	COMMERCIAL AIRPORT
STATE FOREST	GENERAL AIRPORT
STATE GAME	AIRSTRIP
STATE CORSET	SEAPLANE
STATE CARE	AIRPORT RUNWAY
RAILROAD AND RAILWAY FEATURES	CULTURAL FEATURES
EMPIRE BUILDER STATION (AMTRAK)	STATE HISTORICAL MARKER
NORTHSTAR STATION (COMMUTER)	HISTORIC DISTRICT
LIGHT RAIL	HISTORIC SITE
BLUE LINE STATION	MONUMENT
GREEN LINE STATION	CEMETERY
INFRASTRUCTURE FEATURES	BOUNDARY FEATURES
LONG BRIDGE (100' OR GREATER SPAN)	TRIBAL LAND
MAJOR BRIDGE (20' TO 100' SPAN)	COUNTY
MINOR BRIDGE (5' TO 20' SPAN)	MUNICIPALITY
ROAD TUNNEL (100' OR GREATER SPAN)	ADJACENT MUNICIPALITY
RAILROAD BRIDGE (100' OR GREATER SPAN)	FEDERAL ADJUSTED URBAN AREA (2014)
RAILROAD BRIDGE (UNDER 100' SPAN)	MILITARY
SKYWAY	STATE PARK
PEDESTRIAN BRIDGE	NATIONAL FOREST
PEDESTRIAN TUNNEL	NATIONAL AND STATE FOREST
DAM	STATE FOREST
LOCK AND DAM	NATIONAL TRAIL
PUBLIC FACILITIES	NATIONAL TRAIL
STATE CAPITOL	WILDLIFE REFUGE AREA
FEDERAL COURTHOUSE	WILDLIFE MANAGEMENT AREA
COUNTY COURTHOUSE	HYDROLOGIC FEATURES
ARMORY	RIVER OR STREAM (PERENNIAL)
CITY HALL	LAKE, POND OR RESERVOIR
TOWN HALL	STREAM (INTERMITTENT)
COMMUNITY CENTER	PUBLIC MUSEUM
ARENA	EVENT CENTER
STADIUM	CITY CENTERS
POST OFFICE	TRIBAL GOVERNMENT CENTER
FIRE STATION	CITY CENTER
PUBLIC LIBRARY	LOCALLY KNOWN PLACE
PUBLIC MUSEUM	UNINCORPORATED COMMUNITY
EVENT CENTER	



LAST EDITED ON 12-13-2023

Population (U.S. Census 2020): 8,421

To request information from this document in an alternative format, call 651-366-4718 or 1-800-657-3774 (Greater Minnesota); 711 or 1-800-627-3529 (Minnesota Relay). You may also send an e-mail to ADArequest.dot@state.mn.us. (Please request at least one week in advance.)