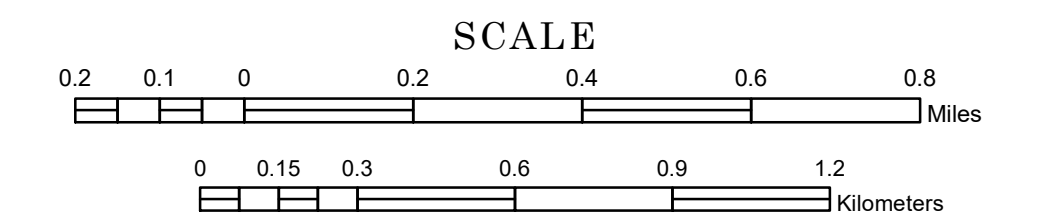


MUNICIPALITY OF LITCHFIELD

PREPARED BY THE
MINNESOTA DEPARTMENT OF TRANSPORTATION
OFFICE OF TRANSPORTATION SYSTEM MANAGEMENT

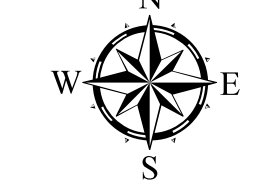
IN COOPERATION WITH
U.S. DEPARTMENT OF TRANSPORTATION
FEDERAL HIGHWAY ADMINISTRATION



1 in = 1,200 ft

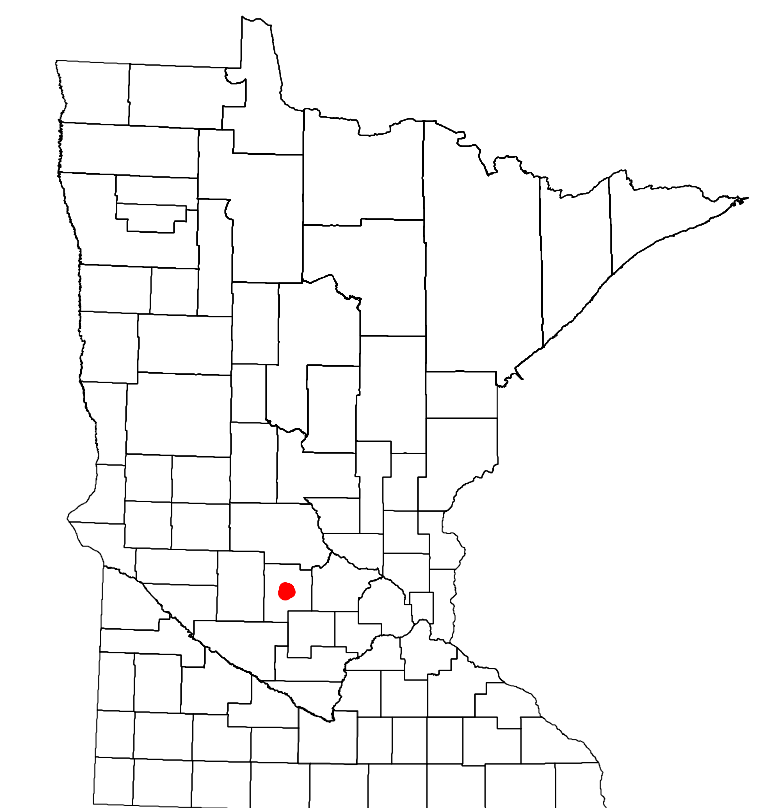
2023

Projection:
Transverse Mercator
NAD 1986
UTM Zone 15

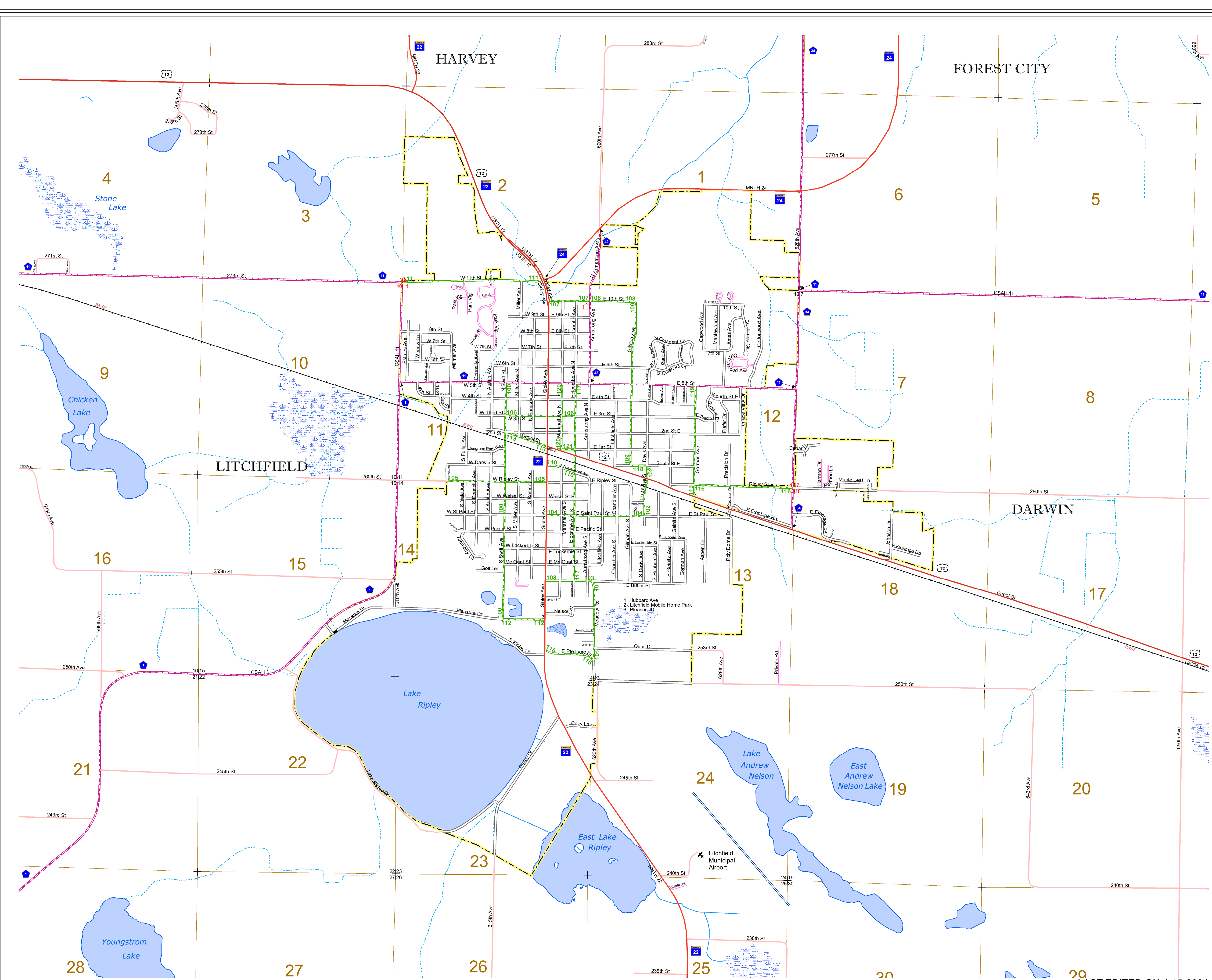


North American Datum
of 1986

ROAD AND ROADWAY FEATURES	INFRASTRUCTURE FEATURES
INTERSTATE	LONG BRIDGE (100' OR GREATER SPAN)
US HIGHWAY	MAJOR BRIDGE (20' TO 100' SPAN)
MN HIGHWAY	MINOR BRIDGE (5' TO 20' SPAN)
COUNTY STATE AID HIGHWAY	ROAD TUNNEL (100' OR GREATER SPAN)
COUNTY ROAD	RAILROAD BRIDGE (100' OR GREATER SPAN)
MUNICIPAL STREET	RAILROAD BRIDGE (UNDER 100' SPAN)
MUNICIPAL STATE AID STREET	SKYWAY
PRIVATE STREET/ROAD	PEDESTRIAN BRIDGE
TOWNSHIP ROAD	PEDESTRIAN TUNNEL
UNORGANIZED TERRITORY ROAD	AVIATION FEATURES
RAMP OR CONNECTOR	COMMERCIAL AIRPORT
GREAT RIVER ROAD	GENERAL AIRPORT
COUNTY STATE AID HIGHWAY (DNE)	AIRSTRIP
MUNICIPAL STATE AID STREET (DNE)	SEAPLANE
TRUNK HIGHWAY FUTURE PROJECTS	AIRPORT RUNWAY
OTHER ROADS	HYDROLOGIC FEATURES
FRONTAGE	RIVER OR STREAM (PERENNIAL)
INDIAN SERVICE	LAKE, POND OR RESERVOIR
RAILROAD AND RAILWAY FEATURES	STREAM (INTERMITTENT)
RAILWAY	DRAINAGE DITCH
BOUNDARY FEATURES	WETLAND
COUNTY	ISLAND OR LAND
MUNICIPALITY	REGIONAL WATERSHED
	OTHER FEATURES
	SECTION CORNER



Population (U.S. Census 2010): 6726



To request information from this document in an alternative format, call 651-366-4718 or 1-800-657-3774 (Greater Minnesota); 711 or 1-800-627-3529 (Minnesota Relay). You may also send an e-mail to ADArequest.dot@state.mn.us. (Please request at least one week in advance.)

LAST EDITED ON 4-15-2024