

MUNICIPALITY OF RED WING

PREPARED BY THE
MINNESOTA DEPARTMENT OF TRANSPORTATION
OFFICE OF TRANSPORTATION SYSTEM MANAGEMENT

IN COOPERATION WITH
U.S. DEPARTMENT OF TRANSPORTATION
FEDERAL HIGHWAY ADMINISTRATION

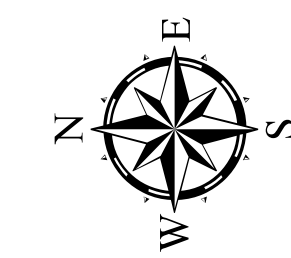
SCALE



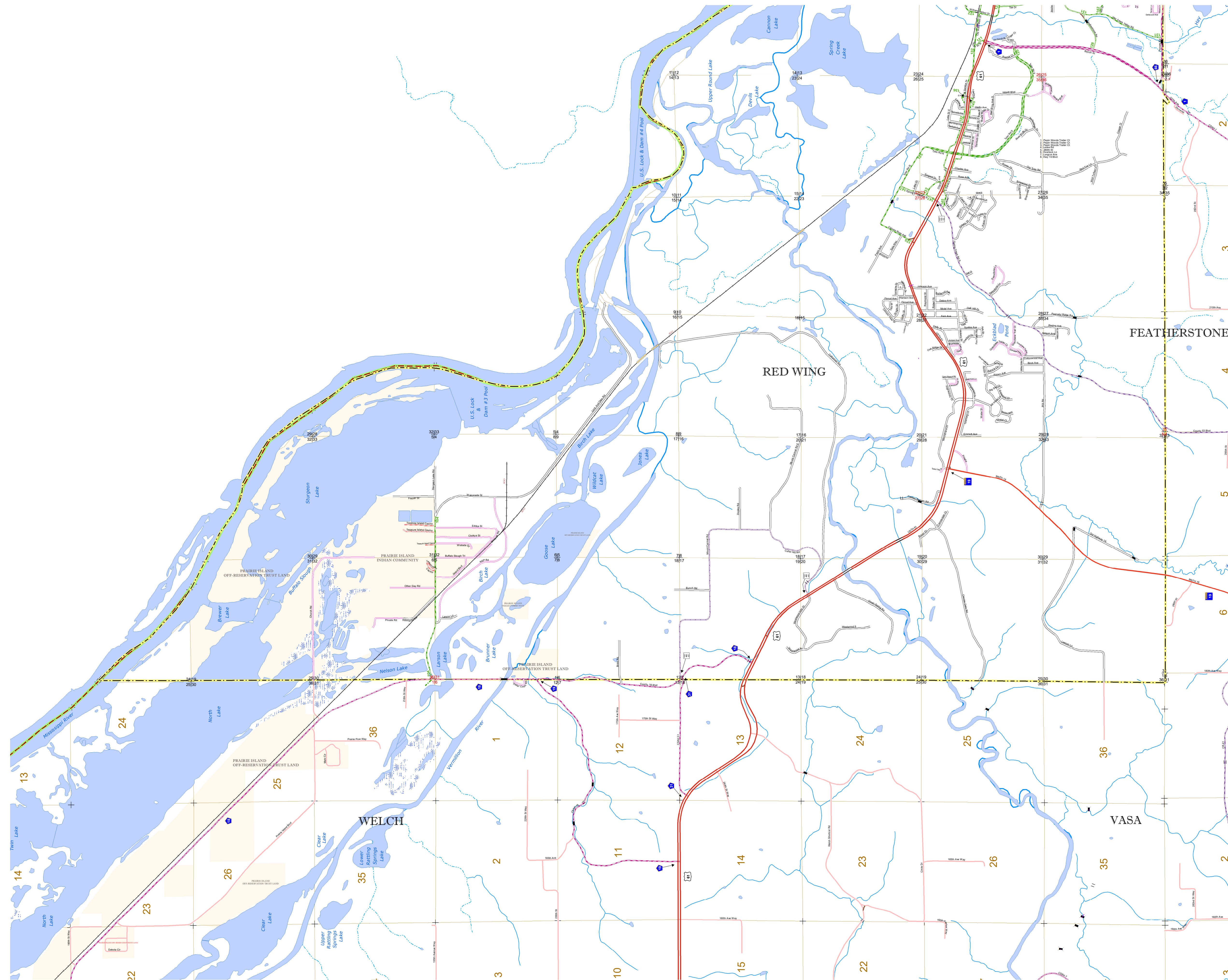
1 in = 2,000 ft

2023

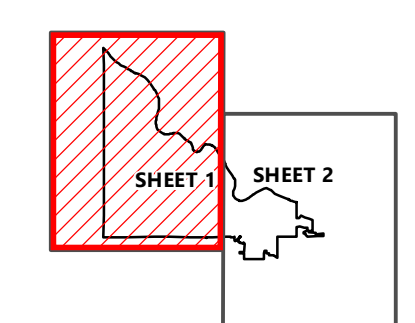
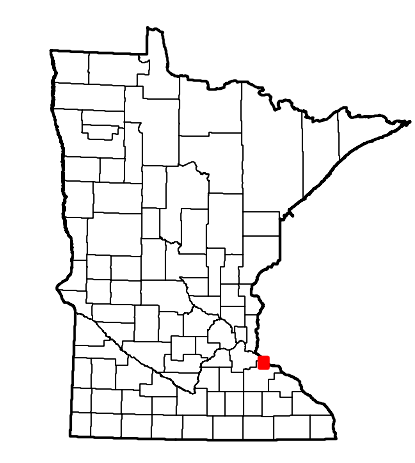
Projection:
Transverse Mercator
NAD 1986
UTM Zone 15



North American Datum
of 1986



ROAD AND HIGHWAY FEATURES		PUBLIC SERVICE FEATURES	
INTERSTATE		MINDOT OFFICE	
US HIGHWAY		MINDOT TRUCK STATION	
MN HIGHWAY		HIGHWAY PATROL DISTRICT OFFICE	
COUNTY STATE AID HIGHWAY		STATE TRAVEL INFORMATION CENTER	
COUNTY ROAD		REST AREA (Full Service)	
MUNICIPAL STATE AID STREET		REST AREA (Wait Toilet)	
MUNICIPAL STREET		WAYSIDE (Vault or Pot Toilet)	
PRIVATE STREET/ROAD		LOCAL PARK	
TOWNSHIP ROAD		PUBLIC ACCESS POINT	
UNORGANIZED TERRITORY ROAD		FAIRGROUNDS	
RAMP OR CONNECTOR		PORT OF ENTRY	
INTERSTATE EXIT		PUNK AND RIDE LOT	
GREAT RIVER ROAD		PUBLIC UNIVERSITY/COLLEGE	
OTHER ROADS		PRIVATE UNIVERSITY/COLLEGE	
FRONTAGE		STATE HISTORICAL MARKER	
INDIAN SERVICE		HISTORIC DISTRICT	
MILITARY		HISTORIC SITE	
		MONUMENT	
		BOUNDARY FEATURES	
COMMERCIAL AIRPORT		TRIBAL LAND	
GENERAL AIRPORT		COUNTY	
AIRSTRIP		MUNICIPALITY	
SEAPLANE		ADJACENT MUNICIPALITY	
AIRPORT RUNWAY		FEDERAL ADJUSTED URBAN AREA (2014)	
		MILITARY	
RAILWAY		VOYAGEURS NATIONAL PARK	
EMPIRE BUILDER STATION (AMTRAK)		BOUNDARY WATERS CANOE AREA WILDERNESS	
NORTH STAR STATION (COMMUTER)		STATE PARK	
LIGHT RAIL		NATIONAL FOREST	
BLUE LINE		NATIONAL AND STATE FOREST	
GREEN LINE		STATE FOREST	
LONG BRIDGE (100' OR GREATER SPAN)		NATIONAL TRAIL	
MAJOR BRIDGE (20' TO 100' SPAN)		WILDLIFE REFUGE AREA	
MINOR BRIDGE (8' TO 20' SPAN)		WILDLIFE MANAGEMENT AREA	
DAM		HYDROLOGIC FEATURES	
LOCK AND DAM		RIVER OR STREAM (PERENNIAL)	
STATE CAPITOL		LAKE, POND OR RESERVOIR	
FEDERAL COURTHOUSE		STREAM (INTERMITTENT)	
COUNTY COURTHOUSE		DRAINAGE DITCH	
ARMORY		WETLAND	
		ISLAND OR LAND	
		REGIONAL WATERSHED	



To request information from this document in an alternative format, call 651-366-4718 or 1-800-657-3774 (Greater Minnesota); 711 or 1-800-627-3529 (Minnesota Relay). You may also send an e-mail to ADArequest.dot@state.mn.us. (Please request at least one week in advance.)

LAST EDITED ON 4-15-2024

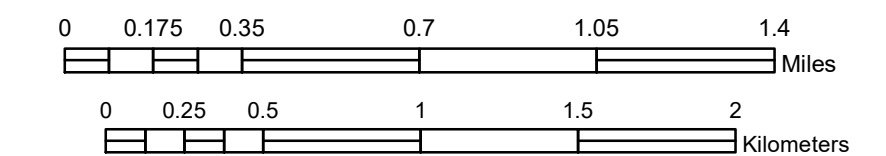
Population (U.S. Census 2010): 16,459

MUNICIPALITY OF RED WING

PREPARED BY THE
MINNESOTA DEPARTMENT OF TRANSPORTATION
OFFICE OF TRANSPORTATION SYSTEM MANAGEMENT

IN COOPERATION WITH
U.S. DEPARTMENT OF TRANSPORTATION
FEDERAL HIGHWAY ADMINISTRATION

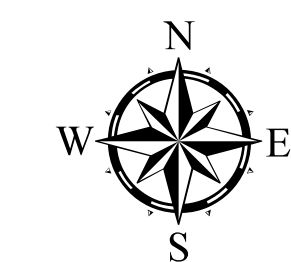
SCALE



1 in = 2,000 ft

2023

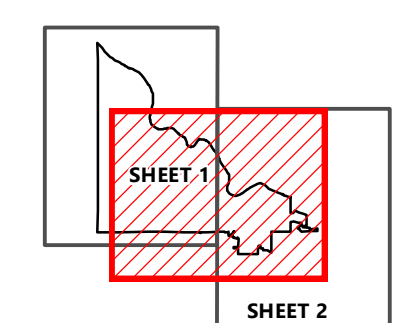
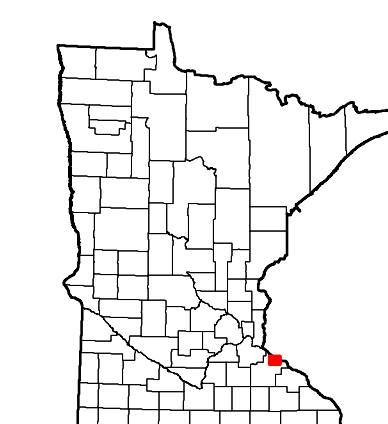
Projection:
Transverse Mercator
NAD 1986
UTM Zone 15



North American Datum
of 1986



ROAD AND HIGHWAY FEATURES		PUBLIC SERVICE FEATURES	
INTERSTATE		MINDOT OFFICE	
US HIGHWAY		MINDOT TRUCK STATION	
MN HIGHWAY		HIGHWAY PATROL DISTRICT OFFICE	
COUNTY STATE AID HIGHWAY		STATE TRAVEL INFORMATION CENTER	
COUNTY ROAD		REST AREA (FULL SERVICE)	
MUNICIPAL STATE AID STREET		REST AREA (WAIT TOILET)	
MUNICIPAL STREET		WAYSIDE (VAULT OR PIP TOILET)	
PRIVATE STREET/ROAD		LOCAL PARK	
TOWNSHIP ROAD		PUBLIC ACCESS POINT	
UNORGANIZED TERRITORY ROAD		FAIRGROUNDS	
RAMP OR CONNECTOR		PORT OF ENTRY	
INTERSTATE EXIT		PUNK AND RIDE LOT	
GREAT RIVER ROAD		PRIVATE UNIVERSITY/COLLEGE	
OTHER ROADS		PRIVATE UNIVERSITY/COLLEGE	
FRONTAGE		STATE HISTORICAL MARKER	
INDUS SERVICE		HISTORIC DISTRICT	
MILITARY		HISTORIC SITE	
		MONUMENT	
		BOUNDARY FEATURES	
		TRIBAL LAND	
		COUNTY	
		MUNICIPALITY	
		ADJACENT MUNICIPALITY	
		FEDERAL ADJUSTED URBAN AREA (2014)	
		MILITARY	
		VOYAGEURS NATIONAL PARK	
		BOUNDARY WATERS CANOE AREA WILDERNESS	
		STATE PARK	
		REGIONAL PARK	
		NATIONAL FOREST	
		NATIONAL AND STATE FOREST	
		STATE FOREST	
		NATIONAL TRAIL	
		WILDLIFE REFUGE AREA	
		WILDLIFE MANAGEMENT AREA	
		RIVER OR STREAM (PULLENMALL)	
		LAKE, POND OR RESERVOIR	
		STREAM (INTERMITTENT)	
		DRAINAGE DITCH	
		WETLAND	
		ISLAND OR LAND	
		REGIONAL WATERSHED	
		CITY CENTERS	
		TRIBAL GOVERNMENT CENTER	
		CITY CENTER	
		LOCALLY KNOWN PLACE	
		UNINCORPORATED COMMUNITY	



To request information from this document in an alternative format, call 651-366-4718 or 1-800-657-3774 (Greater Minnesota); 711 or 1-800-627-3529 (Minnesota Relay). You may also send an e-mail to ADArequest.dot@state.mn.us. (Please request at least one week in advance.)

LAST EDITED ON 4-15-2024

Population (U.S. Census 2010): 16,459