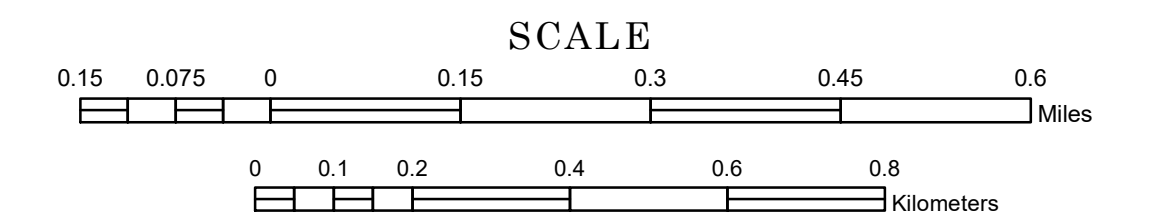


MUNICIPALITY OF GRAND MARAIS

PREPARED BY THE
MINNESOTA DEPARTMENT OF TRANSPORTATION
OFFICE OF TRANSPORTATION SYSTEM MANAGEMENT

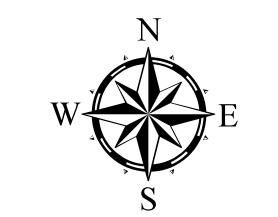
IN COOPERATION WITH
U.S. DEPARTMENT OF TRANSPORTATION
FEDERAL HIGHWAY ADMINISTRATION



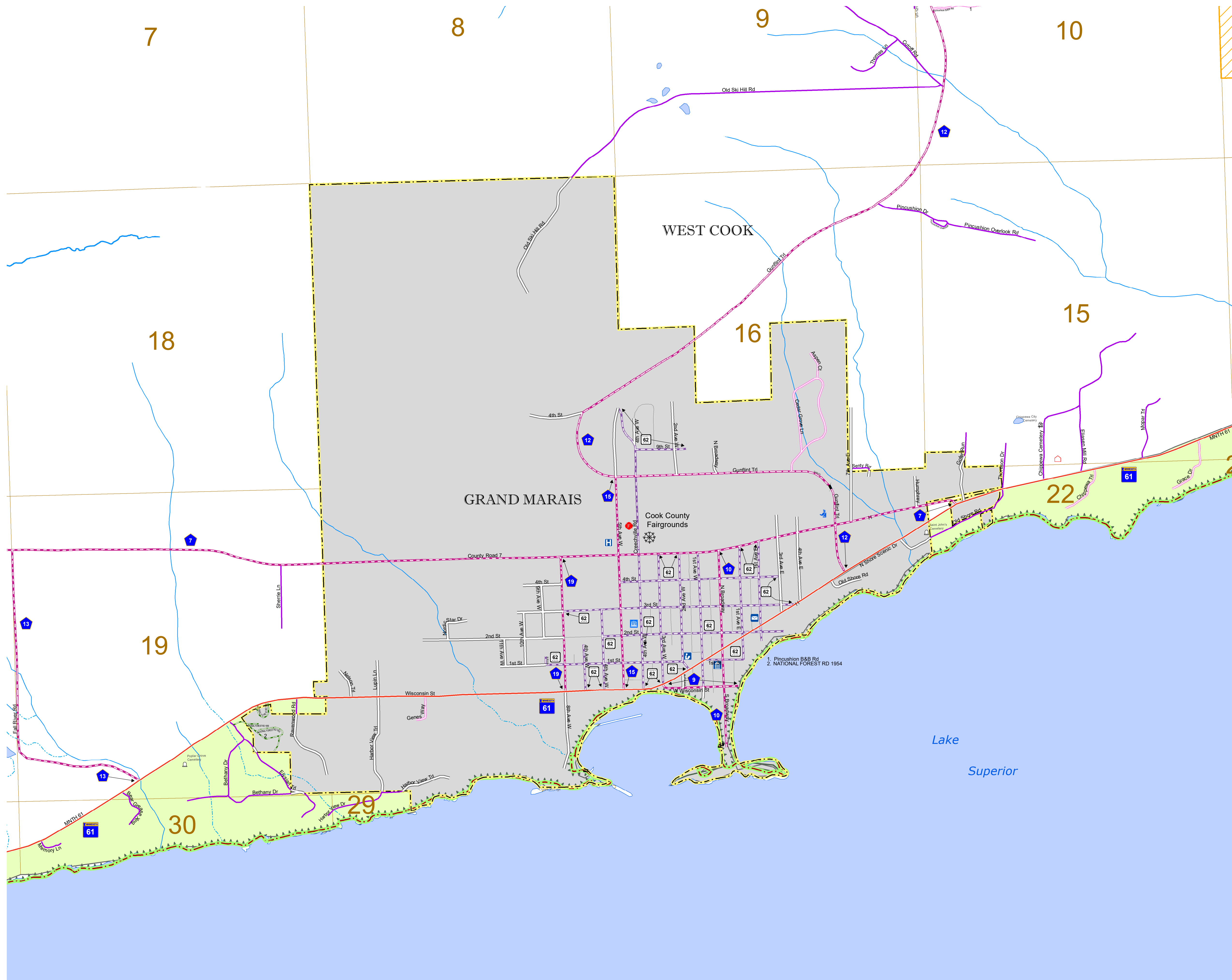
1 in = 800 ft

2023

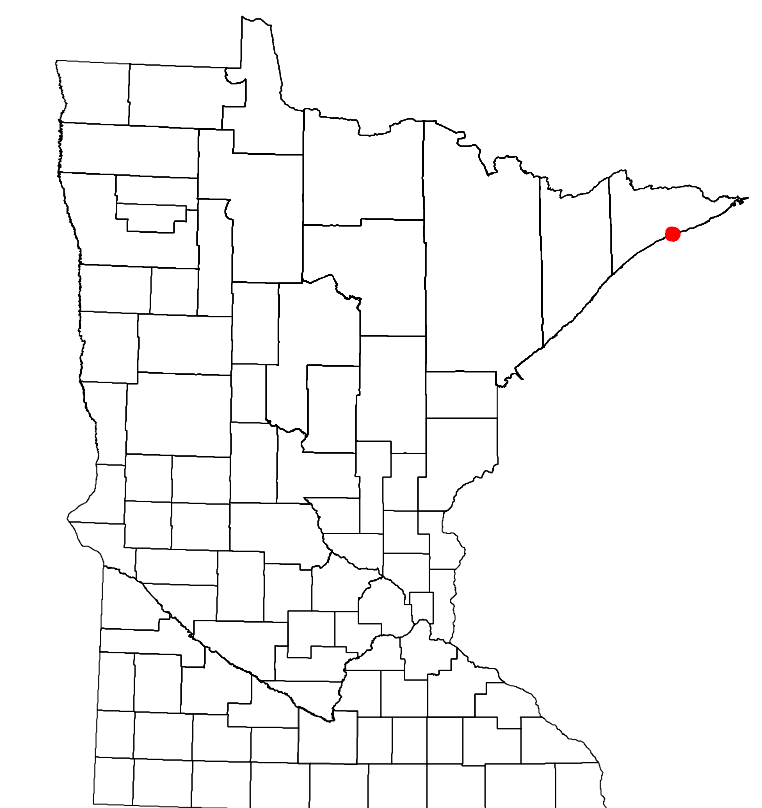
Projection:
Transverse Mercator
NAD 1986
UTM Zone 15



North American Datum
of 1986



ROAD AND ROADWAY FEATURES	PUBLIC SERVICE FEATURES
INTERSTATE	MINOT OFFICE
US HIGHWAY	MINOT TRUCK STATION
BN HIGHWAY	HIGHWAY PATROL DISTRICT OFFICE
COUNTY STATE AID HIGHWAY	STATE TRAVEL INFORMATION CENTER
COUNTY ROAD	REST AREA (Full Service)
MUNICIPAL STREET	REST AREA (Quick Turn)
MUNICIPAL STATE AID STREET	WAYSIDE (Only on Pk Trk 4)
TOWNSHIP ROAD	PUBLIC ACCESS POINT
UNORGANIZED TERRITORY ROAD	LOCAL PARK
RAMP OR CONNECTOR	FARGROUNDS
INTERSTATE EXIT	PORT OF ENTRY
GREAT RIVER ROAD	PARK AND RIDE LOT
OTHER ROADS	PUBLIC UNIVERSITY COLLEGE
FARMROAD	PRIVATE UNIVERSITY COLLEGE
RAILROAD AND RAILWAY FEATURES	ELEMENTARY SCHOOL
EMPIRE BUILDER STATION (ARTHRK)	MIDDLE SCHOOL
NORTHSTAR STATION (COMMUTER)	HIGH SCHOOL
LIGHT RAIL	AVIATION FEATURES
BLUE LINE STATION	COMMERCIAL AIRPORT
GREEN LINE STATION	GENERAL AIRPORT
INFRASTRUCTURE FEATURES	AIRSTRIP
LONG BRIDGE (100' OR GREATER SPAN)	SEAPLANE
RAILROAD BRIDGE (100' OR GREATER SPAN)	AIRPORT RUNWAY
RAILROAD BRIDGE (UNDER 100' SPAN)	CULTURAL FEATURES
SKYWAY	STATE HISTORICAL MARKER
PEDESTRIAN BRIDGE	HISTORIC DISTRICT
PEDESTRIAN TUNNEL	HISTORIC SITE
DAM	MONUMENT
LOCK AND DAM	CEMETERY
PUBLIC FACILITIES	BOUNDARY FEATURES
STATE CAPITOL	TRIBAL LAND
FEDERAL COURTHOUSE	COUNTY
COUNTY COURTHOUSE	MUNICIPALITY
ARMORY	ADJACENT MUNICIPALITY
CITY HALL	FEDERAL ADJUSTED URBAN AREA (2014)
COMMUNITY CENTER	MILITARY
ARENA	STATE PARK
STADIUM	REGIONAL PARK
POST OFFICE	NATIONAL FOREST
POLICE STATION	NATIONAL AND STATE FOREST
FIRE STATION	STATE FOREST
PUBLIC LIBRARY	NATIONAL TRAIL
PUBLIC MUSEUM	WILDLIFE REFUGE AREA
EVENT CENTER	WILDLIFE MANAGEMENT AREA
CITY CENTERS	HYDROLOGIC FEATURES
TRIBAL GOVERNMENT CENTER	RIVER OR STREAM (PERMANENT)
CITY CENTER	LAKE, POND OR RESERVOIR
LOCALLY KNOWN PLACE	STREAM (PERMANENT)
UNINCORPORATED COMMUNITY	DRAINAGE DITCH
	WETLAND
	ISLAND OR LAND
	REGIONAL WATERSHED



To request information from this document in an alternative format, call 651-366-4718 or 1-800-657-3774 (Greater Minnesota); 711 or 1-800-627-3529 (Minnesota Relay). You may also send an e-mail to ADarequest.dot@state.mn.us. (Please request at least one week in advance.)

LAST EDITED ON 12-10-2023

Population (U.S. Census 2020): 1337