

# MUNICIPALITY OF ROUND LAKE

PREPARED BY THE  
MINNESOTA DEPARTMENT OF TRANSPORTATION  
OFFICE OF TRANSPORTATION SYSTEM MANAGEMENT

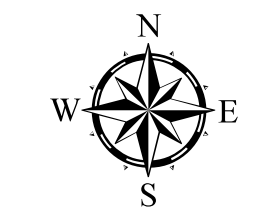
IN COOPERATION WITH  
U.S. DEPARTMENT OF TRANSPORTATION  
FEDERAL HIGHWAY ADMINISTRATION



1 in = 400 ft

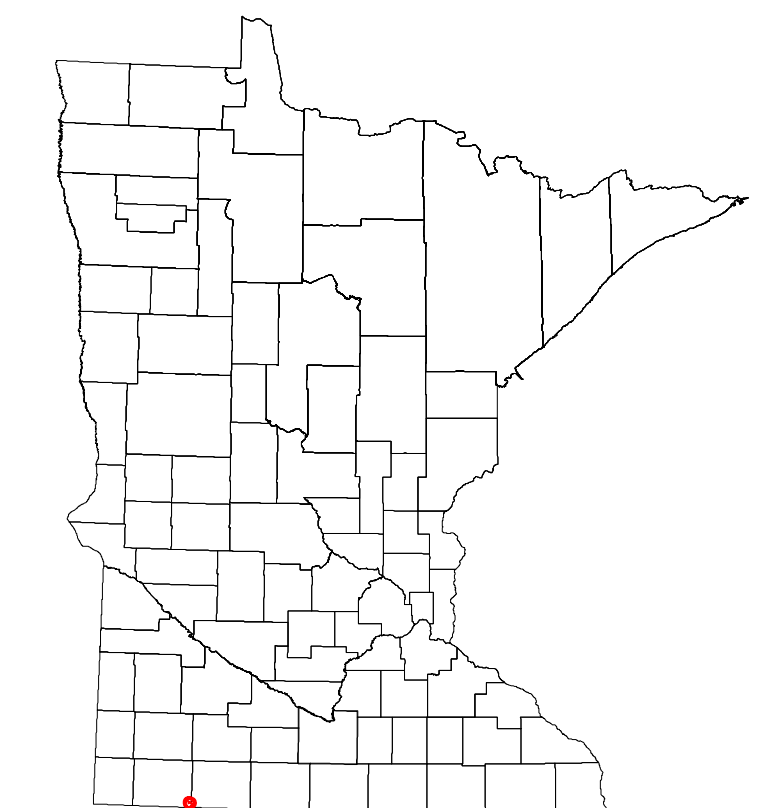
2023

Projection:  
Transverse Mercator  
NAD 1986  
UTM Zone 15

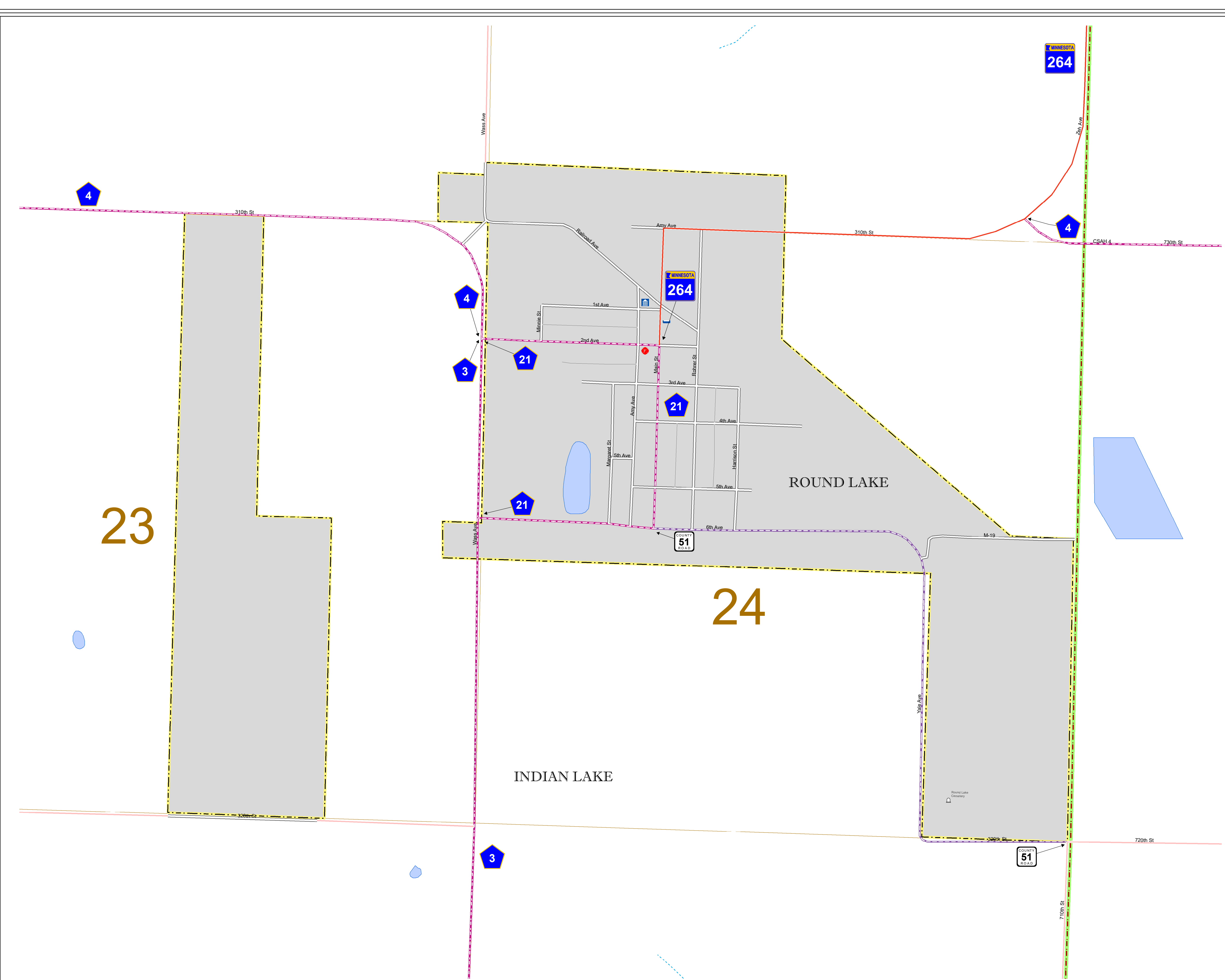


North American Datum  
of 1986

ROAD AND ROADWAY FEATURES	PUBLIC SERVICE FEATURES
INTERSTATE	MINDOT OFFICE
US HIGHWAY	MINDOT TRUCK STATION
STATE HIGHWAY	HIGHWAY PATROL DISTRICT OFFICE
COUNTY STATE AID HIGHWAY	STATE TRAVEL INFORMATION CENTER
COUNTY ROAD	REST AREA (Full Service)
MUNICIPAL STREET	REST AREA (Quick Turn)
MUNICIPAL STATE AID STREET	WAYSIDE (Only on Pk Trunk)
PRIVATE STREET/ROAD	PUBLIC ACCESS POINT
TOWNSHIP ROAD	LOCAL PARK
UNORGANIZED TERRITORY ROAD	FARMS/ROADS
RAMP OR CONNECTOR	PORT OF ENTRY
INTERSTATE EXIT	PARK AND RIDE LOT
GREAT RIVER ROAD	PUBLIC UNIVERSITY/COLLEGE
OTHER ROADS	PRIVATE UNIVERSITY/COLLEGE
FARMROAD	ELEMENTARY SCHOOL
STATE PARK	MIDDLE SCHOOL
NATIONAL PARK	HIGH SCHOOL
MONUMENT	AVIATION FEATURES
STATE FOREST	COMMERCIAL AIRPORT
NATIONAL FOREST	GENERAL AIRPORT
STATE GAME	AIRSTRIP
RAILROAD AND RAILWAY FEATURES	SEAPLANE
RAILROAD	AIRPORT RUNWAY
EMPIRE BUILDER STATION (AMTRAK)	CULTURAL FEATURES
NORTHSTAR STATION (COMCAST)	STATE HISTORICAL MARKER
LIGHT RAIL	HISTORIC DISTRICT
BLUE LINE STATION	HISTORIC SITE
GREEN LINE STATION	MONUMENT
INFRASTRUCTURE FEATURES	CEMETERY
LONG BRIDGE (100' OR GREATER SPAN)	TRIBAL LAND
MAJOR BRIDGE (20' TO 100' SPAN)	COUNTY
MINOR BRIDGE (2' TO 20' SPAN)	MUNICIPALITY
ROAD TUNNEL (100' OR GREATER SPAN)	ADJACENT MUNICIPALITY
RAILROAD BRIDGE (100' OR GREATER SPAN)	FEDERAL ADJUSTED URBAN AREA (2014)
RAILROAD BRIDGE (LESSER 100' SPAN)	MILITARY
SKYWAY	STATE PARK
PEDESTRIAN BRIDGE	REGIONAL PARK
PEDESTRIAN TUNNEL	NATIONAL AND STATE FOREST
DAM	STATE FOREST
LOCK AND DAM	NATIONAL TRAIL
PUBLIC FACILITIES	WILDLIFE REFUGE AREA
STATE CAPITOL	WILDLIFE MANAGEMENT AREA
FEDERAL COURTHOUSE	HYDROLOGIC FEATURES
COUNTY COURTHOUSE	RIVER OR STREAM (PERMANENT)
ARMORY	LAKE, POND OR RESERVOIR
CITY HALL	STREAM (PERMANENT)
TOWN HALL	DRAINAGE DITCH
COMMUNITY CENTER	WETLAND
ARENA	ISLAND OR LAND
STADIUM	REGIONAL WATERSHED
POST OFFICE	
POLICE STATION	
FIRE STATION	
PUBLIC LIBRARY	
PUBLIC MUSEUM	
EVENT CENTER	
CITY CENTERS	
TRIBAL GOVERNMENT CENTER	
CITY CENTER	
LOCALLY INCORPORATED PLACE	
UNINCORPORATED COMMUNITY	



Population (U.S. Census 2020): 377



23

24

To request information from this document in an alternative format, call 651-366-4718 or 1-800-657-3774 (Greater Minnesota); 711 or 1-800-627-3529 (Minnesota Relay). You may also send an e-mail to ADarequest.dot@state.mn.us. (Please request at least one week in advance.)

LAST EDITED ON 12-10-2023