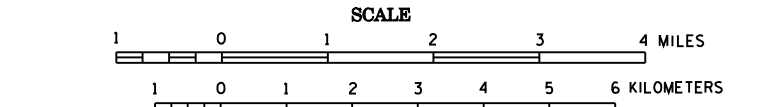


2006 TRUNK HIGHWAY VOLUMES

GENERAL HIGHWAY MAP

AITKIN COUNTY MINNESOTA

PREPARED BY THE MINNESOTA DEPARTMENT OF TRANSPORTATION OFFICE OF TRANSPORTATION DATA & ANALYSIS IN COOPERATION WITH U.S. DEPARTMENT OF TRANSPORTATION FEDERAL HIGHWAY ADMINISTRATION



2006 BASIC DATA - 1977*

Projections Minnesota Coordinate System Central Zone Lambert Conformal Conic North American Datum of 1983



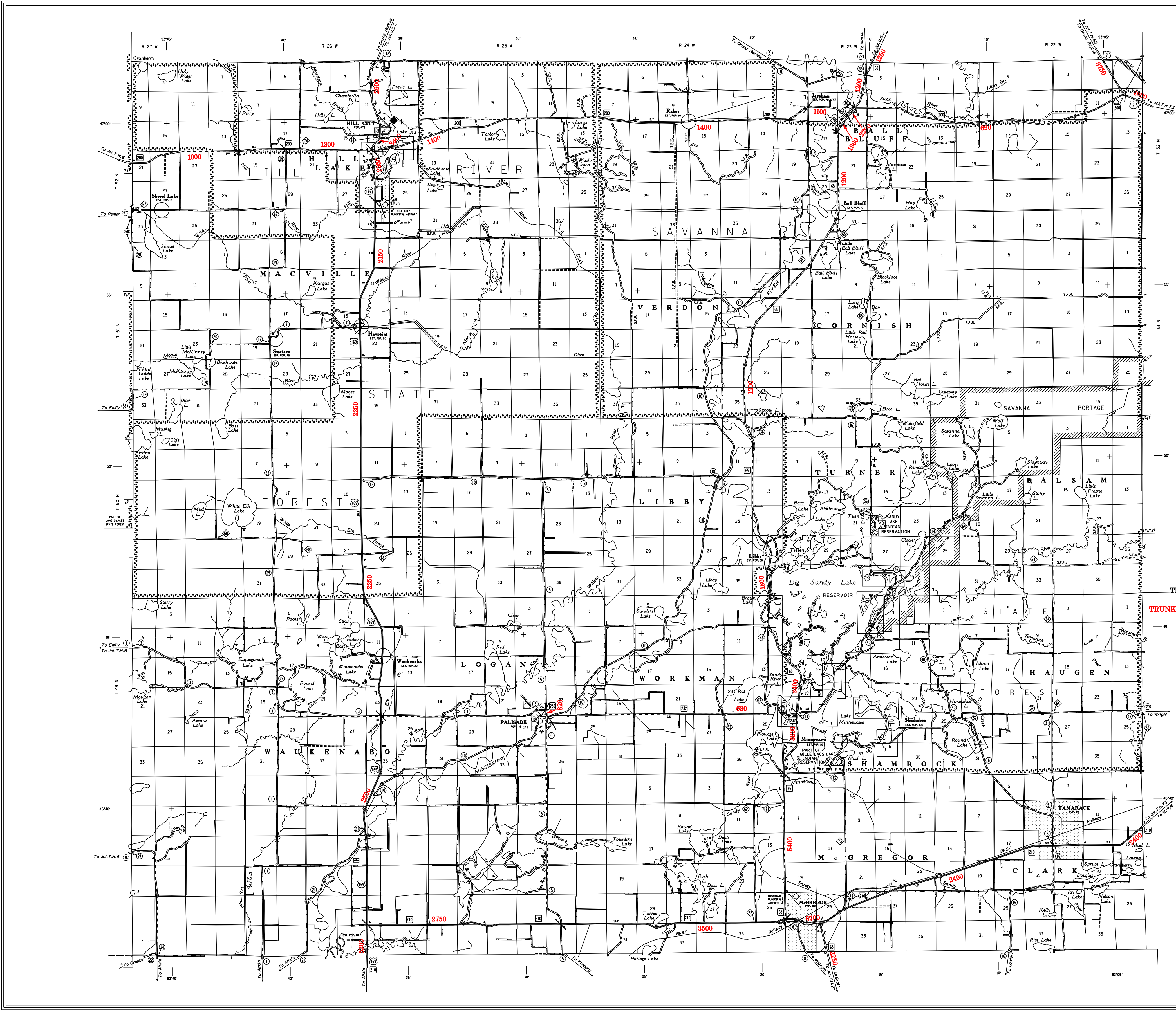
LEGEND

- ROAD AND ROADWAY FEATURES: PROJECTED ROAD, IMPROVED ROAD, GRADED AND GRAVEL ROAD, etc. NAVIGATION: SHIP LINES ON NATURAL STRINGS, etc. CONSERVATION: STATE NUMBERED SYSTEM, etc. RECREATION: GOLF COURSE OR COUNTY CLUB, etc. FARM AND DWELLING UNITS: FARM UNIT, etc. INDUSTRIAL: FACTORY OR INDUSTRIAL PLANT, etc. PUBLIC SERVICE FACILITIES: POST OFFICE, etc. MISCELLANEOUS MAP FEATURES: CHURCH, etc. BOUNDARIES: NATIONAL OR STATE, etc. DRAINAGE: INTERMITTENT DRAIN, etc.

VOLUMES PREPARED BY THE OFFICE OF TRANSPORTATION DATA & ANALYSIS

NUMERALS INDICATE AVERAGE DAILY TRAFFIC VOLUMES ON DESIGNATED ROADS. TRUNK HIGHWAY ROUTES ARE 2006 A.A.D.T. VOLUMES.

FOR DESIGNATED ROADS: / = SEGMENT ENDPOINT FOR ALL ROADS INTERSECTED BY HATCH (= SEGMENT ENDPOINT ONLY FOR ROAD SEPARATED FROM INTERSECTING ROAD BY ARC



*NOTE: ALL FEATURES EXCEPT TOWNSHIP ROADS AND CULTURE ARE CURRENT AS OF JANUARY 1, 2006. NOTE: FOR DETAILS OF COUNTY STATE AID HIGHWAYS AND COUNTY ROADS IN INCORPORATED PLACES, SEE MAPS OF MUNICIPALITIES.

