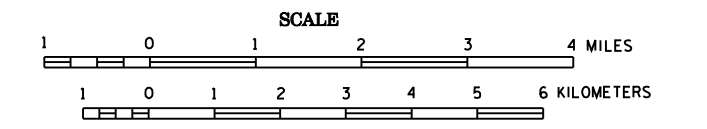


2006 TRUNK HIGHWAY VOLUMES GENERAL HIGHWAY MAP PIPESTONE COUNTY MINNESOTA

PREPARED BY THE
MINNESOTA DEPARTMENT OF TRANSPORTATION
OFFICE OF TRANSPORTATION DATA & ANALYSIS
IN COOPERATION WITH
U.S. DEPARTMENT OF TRANSPORTATION
FEDERAL HIGHWAY ADMINISTRATION



2006
BASIC DATA - 1977*

Projection: Minnesota Coordinate System
South Zone
Lambert Conformal Conic

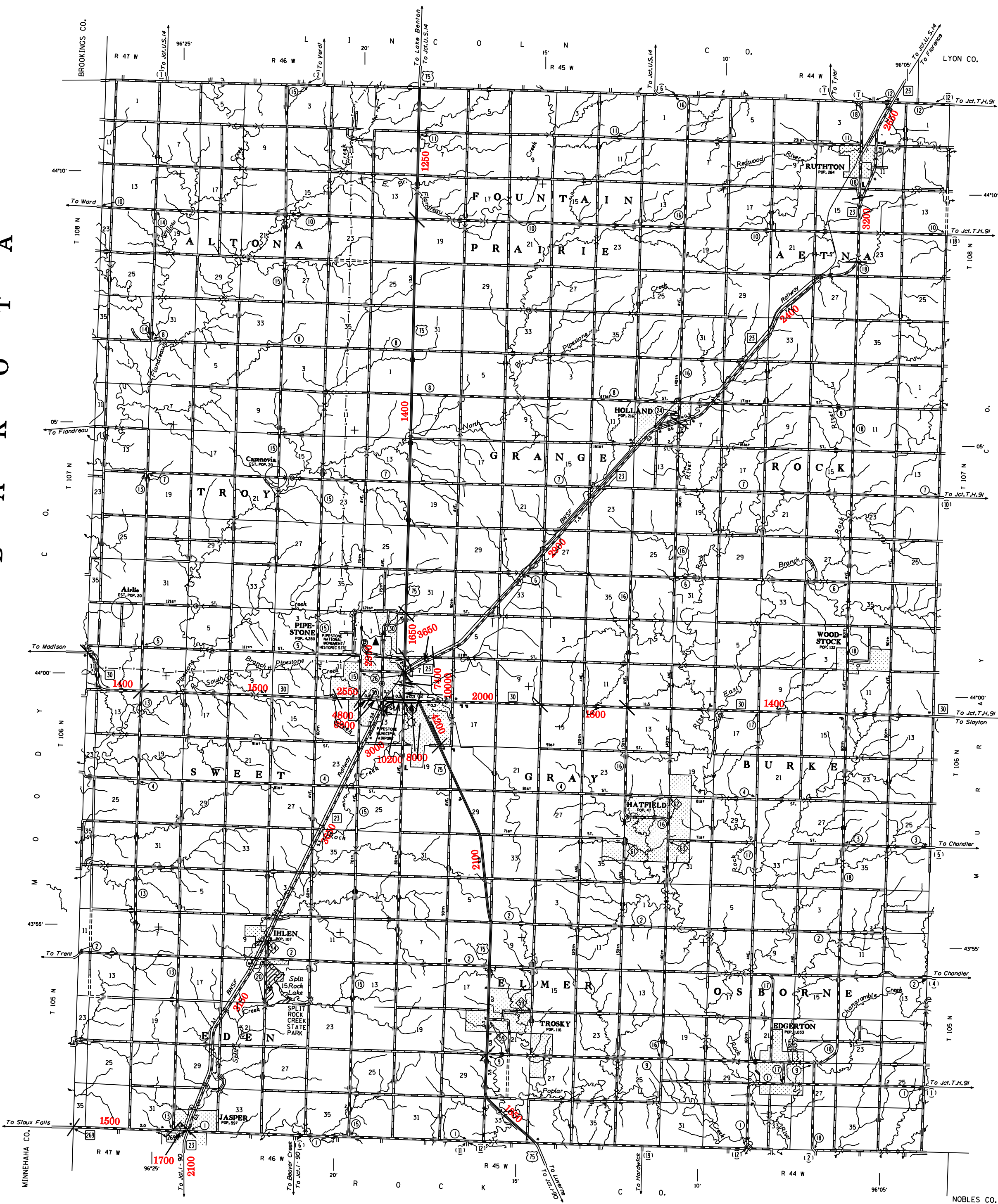
North American Datum
of 1983



LEGEND

- ROAD AND ROADWAY FEATURES**
 - Paved Road
 - Unpaved Road
 - Gravel or Stone Road
 - Gravel or Stone Road with Sand
 - Gravel Road
 - Gravel Road with Sand
 - Gravel Road with Sand and Gravel
 - Gravel Road with Sand and Gravel and Sand
 - Gravel Road with Sand and Gravel and Sand and Gravel
 - Gravel Road with Sand and Gravel and Sand and Gravel and Sand
- NAVIGATION**
 - Shoal Lines on Sand Lines
 - Shoal Lines on Sand Lines
 - Shoal Lines on Sand Lines
 - Shoal Lines on Sand Lines
 - Shoal Lines on Sand Lines
 - Shoal Lines on Sand Lines
 - Shoal Lines on Sand Lines
 - Shoal Lines on Sand Lines
 - Shoal Lines on Sand Lines
 - Shoal Lines on Sand Lines
- CONSERVATION**
 - Forest Ranger Station
 - State Game Station
 - State Game Station
 - State Game Station
 - State Game Station
 - State Game Station
 - State Game Station
 - State Game Station
 - State Game Station
 - State Game Station
- ROAD SYSTEM DESIGNATIONS**
 - State Highway
 - County State Aid Highway
 - County State Aid Highway
 - County State Aid Highway
 - County State Aid Highway
 - County State Aid Highway
 - County State Aid Highway
 - County State Aid Highway
 - County State Aid Highway
 - County State Aid Highway
- RAILROADS**
 - Interstate
 - Interstate
 - Interstate
 - Interstate
 - Interstate
 - Interstate
 - Interstate
 - Interstate
 - Interstate
 - Interstate
- AIRWAYS**
 - Military Field
 - Military Field
 - Military Field
 - Military Field
 - Military Field
 - Military Field
 - Military Field
 - Military Field
 - Military Field
 - Military Field
- STRUCTURES**
 - Highway Bridge
 - Highway Bridge
 - Highway Bridge
 - Highway Bridge
 - Highway Bridge
 - Highway Bridge
 - Highway Bridge
 - Highway Bridge
 - Highway Bridge
 - Highway Bridge
- BOUNDARIES**
 - National
 - National
 - National
 - National
 - National
 - National
 - National
 - National
 - National
 - National
- DRAINAGE**
 - Intermittent Stream
 - Intermittent Stream
 - Intermittent Stream
 - Intermittent Stream
 - Intermittent Stream
 - Intermittent Stream
 - Intermittent Stream
 - Intermittent Stream
 - Intermittent Stream
 - Intermittent Stream
- WATER**
 - Natural or State Forest
 - Natural or State Forest
 - Natural or State Forest
 - Natural or State Forest
 - Natural or State Forest
 - Natural or State Forest
 - Natural or State Forest
 - Natural or State Forest
 - Natural or State Forest
 - Natural or State Forest
- CITY CENTERS**
 - City Center
 - City Center
 - City Center
 - City Center
 - City Center
 - City Center
 - City Center
 - City Center
 - City Center
 - City Center
- MISCELLANEOUS MAP FEATURES**
 - City Center
 - City Center
 - City Center
 - City Center
 - City Center
 - City Center
 - City Center
 - City Center
 - City Center
 - City Center
- BOUNDARIES**
 - National
 - National
 - National
 - National
 - National
 - National
 - National
 - National
 - National
 - National
- DRAINAGE**
 - Intermittent Stream
 - Intermittent Stream
 - Intermittent Stream
 - Intermittent Stream
 - Intermittent Stream
 - Intermittent Stream
 - Intermittent Stream
 - Intermittent Stream
 - Intermittent Stream
 - Intermittent Stream
- WATER**
 - Natural or State Forest
 - Natural or State Forest
 - Natural or State Forest
 - Natural or State Forest
 - Natural or State Forest
 - Natural or State Forest
 - Natural or State Forest
 - Natural or State Forest
 - Natural or State Forest
 - Natural or State Forest
- CITY CENTERS**
 - City Center
 - City Center
 - City Center
 - City Center
 - City Center
 - City Center
 - City Center
 - City Center
 - City Center
 - City Center
- MISCELLANEOUS MAP FEATURES**
 - City Center
 - City Center
 - City Center
 - City Center
 - City Center
 - City Center
 - City Center
 - City Center
 - City Center
 - City Center

S
O
U
T
H
D
A
K
O
T
A



VOLUMES PREPARED BY
THE OFFICE OF
TRANSPORTATION DATA & ANALYSIS

NUMERALS INDICATE AVERAGE DAILY
TRAFFIC VOLUMES ON DESIGNATED ROADS.

TRUNK HIGHWAY ROUTES ARE 2006 A.A.D.T. VOLUMES.

FOR DESIGNATED ROADS :
/ = SEGMENT ENDPOINT FOR ALL
ROADS INTERSECTED BY HATCH
(= SEGMENT ENDPOINT ONLY FOR
ROAD SEGMENTED FROM INTERSECTING
ROAD BY ARC

*NOTE: ALL FEATURES EXCEPT TOWNSHIP ROADS AND
CULTURE ARE CURRENT AS OF JANUARY 1, 2006.
NOTE: FOR DETAIL OF COUNTY STATE AID HIGHWAYS AND COUNTY
ROADS IN INCORPORATED PLACES, SEE MAPS OF MUNICIPALITIES.

