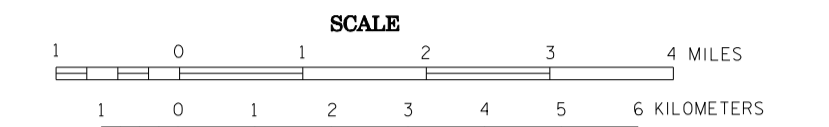


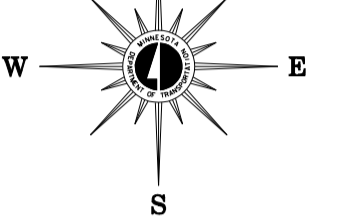
GENERAL HIGHWAY MAP  
BELTRAMI COUNTY  
MINNESOTA

PREPARED BY THE  
MINNESOTA DEPARTMENT OF TRANSPORTATION  
OFFICE OF TRANSPORTATION DATA & ANALYSIS  
IN COOPERATION WITH  
U.S. DEPARTMENT OF TRANSPORTATION  
FEDERAL HIGHWAY ADMINISTRATION



2008

BASIC DATA - 1977  
Projection: Minnesota Coordinate System, North Zone, Lambert Conformal Conic  
North American Datum of 1983



LEGEND

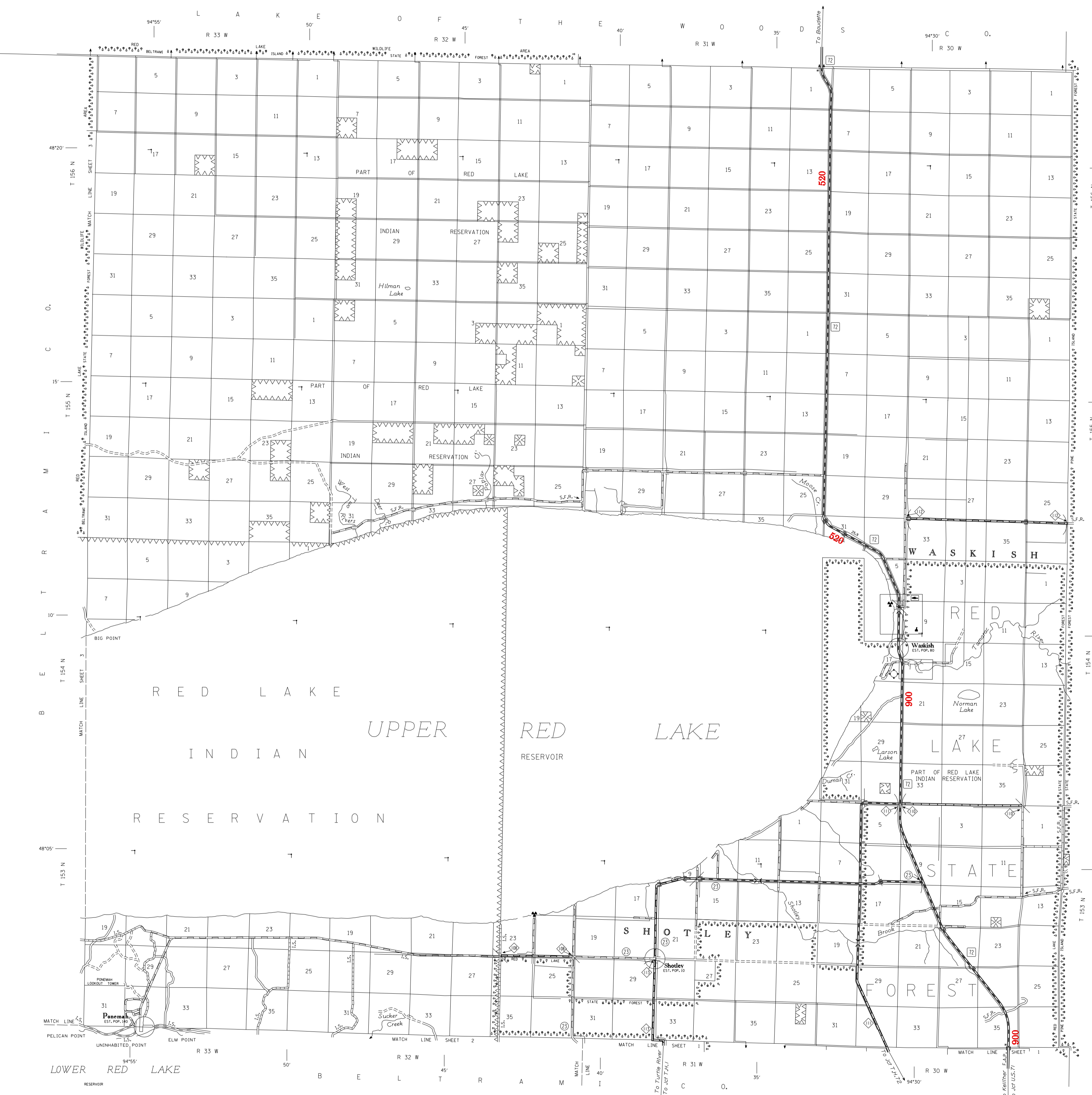
Table with multiple columns: ROAD AND ROADWAY FEATURES, NAVIGATION, CONSERVATION, RECREATION, FARM AND DWELLING UNITS, INDUSTRIAL, COMMERCIAL, PUBLIC SERVICE FACILITIES, CITY CENTERS, MISCELLANEOUS MAP FEATURES, BOUNDARIES, DRAINAGE. Each feature is accompanied by a specific symbol or line style.

VOLUMES PREPARED BY  
THE OFFICE OF  
TRANSPORTATION DATA & ANALYSIS

NUMERALS INDICATE AVERAGE DAILY  
TRAFFIC VOLUMES ON DESIGNATED ROADS.

TRUNK HIGHWAY ROUTES ARE 2008 A.A.T. VOLUMES

FOR DESIGNATED ROADS:  
/ = SEGMENT ENDPOINT FOR ALL  
ROADS INTERSECTED BY HATCH  
( = SEGMENT ENDPOINT ONLY FOR  
ROAD SEPARATED FROM INTERSECTING  
ROAD BY ARC



TRAFFIC VOLUMES ARE SUBJECT TO VARIABILITY AND CONSTRUCTION EFFECTS  
FOR MORE INFO VISIT: <http://www.dot.state.mn.us/traffic/data/html/aadt.html>

NOTE: ALL FEATURES EXCEPT TOWNSHIP ROADS AND  
CULTURE ARE CURRENT AS OF JANUARY 1, 2008.  
NOTE: FOR DETAIL OF COUNTY STATE AID HIGHWAYS AND COUNTY  
ROADS IN INCORPORATED PLACES, SEE MAPS OF MUNICIPALITIES.

