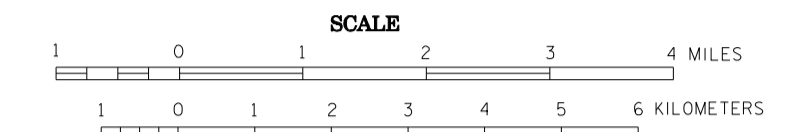


2008 TRUNK HIGHWAY VOLUMES
GENERAL HIGHWAY MAP
LAKE COUNTY MINNESOTA

PREPARED BY THE
MINNESOTA DEPARTMENT OF TRANSPORTATION
OFFICE OF TRANSPORTATION DATA & ANALYSIS
IN COOPERATION WITH
U.S. DEPARTMENT OF TRANSPORTATION
FEDERAL HIGHWAY ADMINISTRATION



2008
BASIC DATA - 1977*

Projections
Minnesota Coordinate System
North Zone
Lambert Conformal Conic

North American Datum
of 1983



LEGEND

ROAD AND ROADWAY FEATURES	NAVIGATION
PROJECTED ROAD	RAIL LINES ON NATURAL TERRAIN
UNIMPROVED ROAD	SHIP LINES ON INLAND LAKES
GRAVEL OR GRADED ROAD	DOCK PIER ON LAKE
ROAD SURFACE ROAD	NAVIGABLE STREAM
GRAVEL OR STONE ROAD	LANDMARK LIGHT BEACON
BITUMINOUS ROAD	LIGHTHOUSE
PAVED ROAD	
ROAD UNDER CONSTRUCTION	
ROADS IN LANDSCAPE DESIGN	
TERMINUS OF ROAD (ROAD NOT PAID WITHIN MUNICIPALITIES AND PROVINCE BOUNDARIES)	
POINTS BETWEEN WHICH DISTANCES ARE MEASURED INDICATED THIS WAY	
GRADE SEPARATION	
FULL TRAFFIC INTERCHANGE	
PARTIAL TRAFFIC INTERCHANGES INDICATING TRAFFIC MOVEMENT	
ROAD SYSTEM DESIGNATIONS	CONSERVATION
INTERSTATE TRUNK HIGHWAY	FOREST RANGER STATION
UNNUMBERED TRUNK HIGHWAY	GUARD OR TRAPLINE STATION
STATE NUMBERED TRUNK HIGHWAY	NOT PERMANENTLY OCCUPIED
COUNTY STATE AID HIGHWAY	FOOT PATHWAY
COUNTY STATE AID IN COASTING SEASON	GAME PRESERVE
TERMINATION OF DESIGNATED ROAD	STATEMENT OF LANDSCAPE VALUES
	PROFOUND ELEVATION
	SMALL POND OF STATE OR COUNTY
	WATERWAY
	PUBLIC ACCESS POINT
RAILROADS	RECREATION
RAILROAD (ANY NUMBER OF TRACKS BY A SINGLE OPERATING COMPANY OR BY TRAINS OF ANOTHER COMPANY UNDER TRUCKING RIGHTS)	GOLF COURSE OR COUNTRY CLUB
RAILROADS IN ANTICIPATION (TWO OR MORE TRACKS OF SEPARATELY OPERATED COMPANIES OR RESIDENT RIGHTS OF WAY)	SOFTBALL FIELD
RAILROAD STATION	ATHLETIC FIELD
GRADE CROSSING	PLAYGROUND
UNDESIGNED HIGHWAY BELIEVED TO BE A GRADE CROSSING	BOATING BEACH OR SWIMMING POOL
OVERPASS HIGHWAY ABOVE	CAMP SITE
	CAMP OR LODGE
ARWAYS	FARM AND DWELLING UNITS
MILITARY FIELD	FARM UNIT
COMMERCIAL OR MANAGERIAL FIELD	WELLING OTHER THAN FARM
COMPLETE FACILITIES	BARRACKS OR QUARTERS FOR STUDENTS
LANDING AREA OR STRIP	BARRACKS, WORKSHOPS, ETC.
SEAPLANE BASE	SEASONAL DWELLING
AIRWAY LIGHT BEACON (GENERAL)	HOUSE OR GROUP OF BUILDINGS CLOSELY SPACED
RAID WARE STATION	INDICATES NUMBER OF EACH UNIT
	SHOWS LOCATION OF ANY CULTURAL FEATURE
	SHOWS TYPE OF POSITION
STRUCTURES	INDUSTRIAL
General of Symbols lower 20' apart	FACTORY OR INDUSTRIAL PLANT
General of Symbols 20' to 30' apart	SMELT
General of Symbols 30' to 40' apart	STORAGE TANKS, OIL OR GAS
General of Symbols 40' to 50' apart	STEEL MILL
General of Symbols 50' to 60' apart	STOCKYARD FEEDLOT
General of Symbols 60' to 70' apart	QUARRY
General of Symbols 70' to 80' apart	MILK CONDENSERY OR CHEESE FACTORY
General of Symbols 80' to 90' apart	WAREHOUSE
General of Symbols 90' to 100' apart	
General of Symbols 100' to 110' apart	
General of Symbols 110' to 120' apart	
General of Symbols 120' to 130' apart	
General of Symbols 130' to 140' apart	
General of Symbols 140' to 150' apart	
General of Symbols 150' to 160' apart	
General of Symbols 160' to 170' apart	
General of Symbols 170' to 180' apart	
General of Symbols 180' to 190' apart	
General of Symbols 190' to 200' apart	
General of Symbols 200' to 210' apart	
General of Symbols 210' to 220' apart	
General of Symbols 220' to 230' apart	
General of Symbols 230' to 240' apart	
General of Symbols 240' to 250' apart	
General of Symbols 250' to 260' apart	
General of Symbols 260' to 270' apart	
General of Symbols 270' to 280' apart	
General of Symbols 280' to 290' apart	
General of Symbols 290' to 300' apart	
General of Symbols 300' to 310' apart	
General of Symbols 310' to 320' apart	
General of Symbols 320' to 330' apart	
General of Symbols 330' to 340' apart	
General of Symbols 340' to 350' apart	
General of Symbols 350' to 360' apart	
General of Symbols 360' to 370' apart	
General of Symbols 370' to 380' apart	
General of Symbols 380' to 390' apart	
General of Symbols 390' to 400' apart	
General of Symbols 400' to 410' apart	
General of Symbols 410' to 420' apart	
General of Symbols 420' to 430' apart	
General of Symbols 430' to 440' apart	
General of Symbols 440' to 450' apart	
General of Symbols 450' to 460' apart	
General of Symbols 460' to 470' apart	
General of Symbols 470' to 480' apart	
General of Symbols 480' to 490' apart	
General of Symbols 490' to 500' apart	
General of Symbols 500' to 510' apart	
General of Symbols 510' to 520' apart	
General of Symbols 520' to 530' apart	
General of Symbols 530' to 540' apart	
General of Symbols 540' to 550' apart	
General of Symbols 550' to 560' apart	
General of Symbols 560' to 570' apart	
General of Symbols 570' to 580' apart	
General of Symbols 580' to 590' apart	
General of Symbols 590' to 600' apart	
General of Symbols 600' to 610' apart	
General of Symbols 610' to 620' apart	
General of Symbols 620' to 630' apart	
General of Symbols 630' to 640' apart	
General of Symbols 640' to 650' apart	
General of Symbols 650' to 660' apart	
General of Symbols 660' to 670' apart	
General of Symbols 670' to 680' apart	
General of Symbols 680' to 690' apart	
General of Symbols 690' to 700' apart	
General of Symbols 700' to 710' apart	
General of Symbols 710' to 720' apart	
General of Symbols 720' to 730' apart	
General of Symbols 730' to 740' apart	
General of Symbols 740' to 750' apart	
General of Symbols 750' to 760' apart	
General of Symbols 760' to 770' apart	
General of Symbols 770' to 780' apart	
General of Symbols 780' to 790' apart	
General of Symbols 790' to 800' apart	
General of Symbols 800' to 810' apart	
General of Symbols 810' to 820' apart	
General of Symbols 820' to 830' apart	
General of Symbols 830' to 840' apart	
General of Symbols 840' to 850' apart	
General of Symbols 850' to 860' apart	
General of Symbols 860' to 870' apart	
General of Symbols 870' to 880' apart	
General of Symbols 880' to 890' apart	
General of Symbols 890' to 900' apart	
General of Symbols 900' to 910' apart	
General of Symbols 910' to 920' apart	
General of Symbols 920' to 930' apart	
General of Symbols 930' to 940' apart	
General of Symbols 940' to 950' apart	
General of Symbols 950' to 960' apart	
General of Symbols 960' to 970' apart	
General of Symbols 970' to 980' apart	
General of Symbols 980' to 990' apart	
General of Symbols 990' to 1000' apart	

VOLUMES PREPARED BY
THE OFFICE OF
TRANSPORTATION DATA & ANALYSIS

NUMERALS INDICATE AVERAGE DAILY
TRAFFIC VOLUMES ON DESIGNATED ROADS.

TRUNK HIGHWAY ROUTES ARE 2008 A.A.D.T. VOLUMES

FOR DESIGNATED ROADS :
/ = SEGMENT ENDPOINT FOR ALL
ROADS INTERSECTED BY HATCH
(= SEGMENT ENDPOINT ONLY FOR
ROAD SEPARATED FROM INTERSECTING
ROAD BY ARC

TRAFFIC VOLUMES ARE SUBJECT TO VARIABILITY AND CONSTRUCTION EFFECTS
FOR MORE INFO VISIT: <http://www.dot.state.mn.us/traffic/data/html/aadt.html>

*NOTE: ALL FEATURES EXCEPT TOWNSHIP ROADS AND
CULTURE ARE CURRENT AS OF JANUARY 1, 2008.
NOTE: FOR DETAIL OF COUNTY STATE AID HIGHWAYS AND COUNTY
ROADS IN INCORPORATED PLACES, SEE MAPS OF MUNICIPALITIES.

