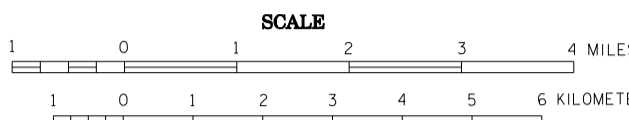
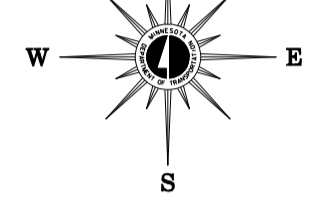


2009 TH VOLUMES GENERAL HIGHWAY MAP CLEARWATER COUNTY MINNESOTA

PREPARED BY THE
MINNESOTA DEPARTMENT OF TRANSPORTATION
OFFICE OF TRANSPORTATION DATA & ANALYSIS
IN COOPERATION WITH
U.S. DEPARTMENT OF TRANSPORTATION
FEDERAL HIGHWAY ADMINISTRATION



2009
BASIC DATA - 1977*
Projections
Minnesota Coordinate System
North Zone
Lambert Conformal Conic
North American Datum
of 1983



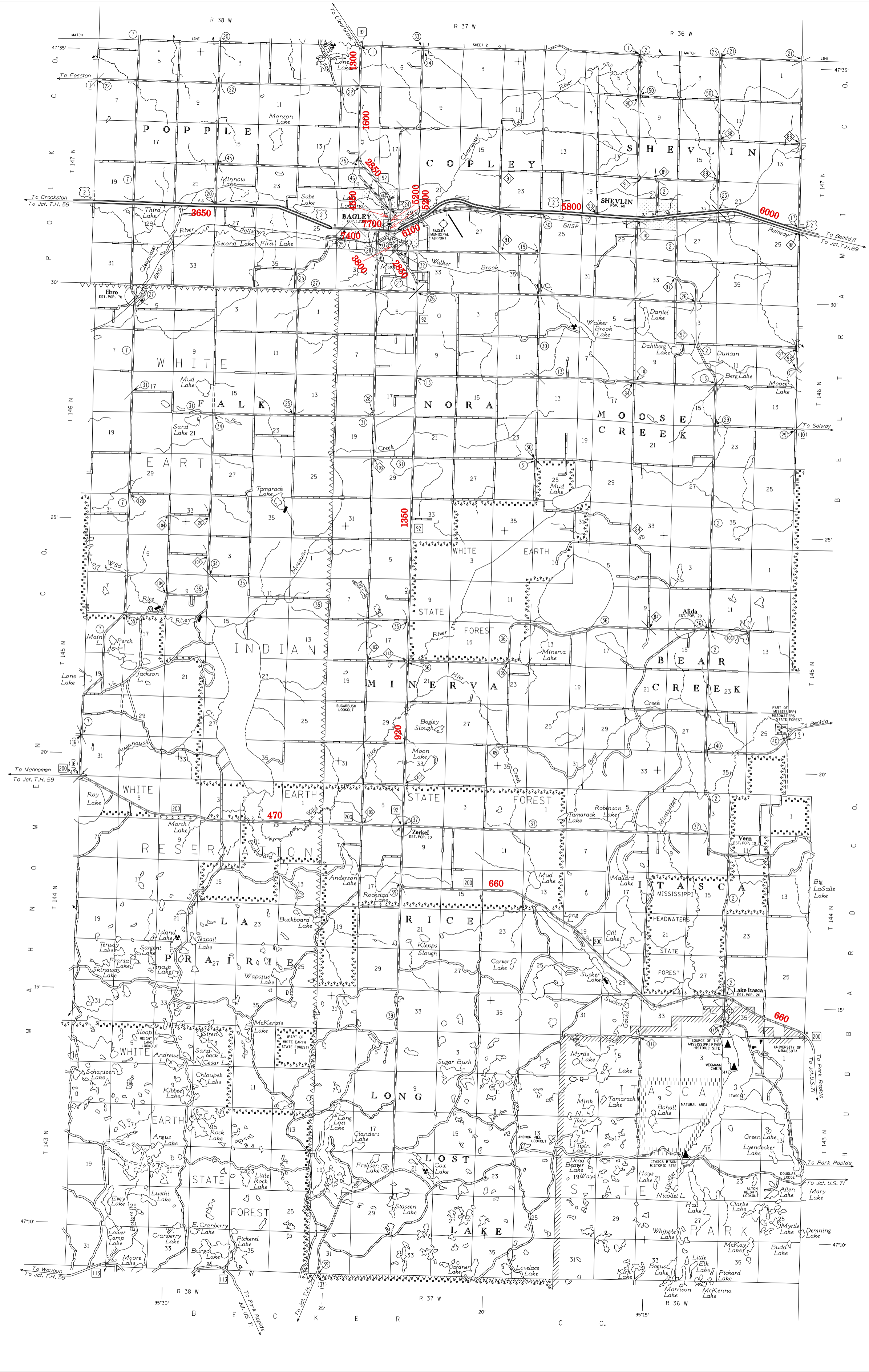
LEGEND

ROAD AND ROADWAY FEATURES	NAVIGATION
PROJECTED ROAD	RAVE LINES ON MAIN CANALS
UNIMPROVED ROAD	SHIP LINES ON TRAIL LAKES
GRAVEL ROAD	DOCK, PIER OR LANDING
GRAVEL OR STONE ROAD	NAVIGABLE STREAM
BITUMINOUS ROAD	LANDMARK LIGHT BEACON
PAVED ROAD	LIGHTHOUSE
TRUNK HIGHWAY UNDER CONSTRUCTION	
ROADS IN UNINCORPORATED PLACES	
EXTENSION OF LOCAL ROADS NOT PAID BY LOCAL MUNICIPALITIES AND COUNTIES	
POINT TO POINT DISTANCES	
ARC MEASURES INDICATED THIS WAY	
ROAD SYSTEM DESIGNATIONS	CONSERVATION
INTERSTATE TRUNK HIGHWAY	FOREST RANGER STATION
STATE-NUMBERED TRUNK HIGHWAY	GARAGE OR RANGER STATION
COUNTY STATE AID HIGHWAY	NOT PERMANENTLY OCCUPIED
COUNTY STATE AID IN QUALIFYING COUNTY	FISH HATCHERY
TEMPORARILY DESIGNATED ROAD	SAME PRESERVE
GREAT RIVER ROAD	DESIGNATION OF LOOKOUT TREES
FEDERAL AID HIGHWAY	PROPOSED ELEVATION
NATIONAL FOREST	INDICATED NUMBER OF FEET DEEP
INDIAN SERVICE ROAD	INDICATED NUMBER OF FEET DEEP
STATE TRUNK ROAD	STATE HIGHWAY RIGHT OF WAY
	STATE HIGHWAY RIGHT OF WAY
RAILROADS	RAILROADS
RAILROADS IN OPERATION BY A SINGLE OPERATING COMPANY OR BY TRUNKS OF ANOTHER COMPANY UNDER THROUGH RIGHTS	RAILROADS IN OPERATION BY A SINGLE OPERATING COMPANY OR BY TRUNKS OF ANOTHER COMPANY UNDER THROUGH RIGHTS
RAILROADS IN ANTICIPATION OF TWO OR MORE TRUNKS OR SEPARATELY OPERATED COMPANIES ON ADJACENT RIGHTS OF WAY	RAILROADS IN ANTICIPATION OF TWO OR MORE TRUNKS OR SEPARATELY OPERATED COMPANIES ON ADJACENT RIGHTS OF WAY
RAILROAD STATION	RAILROAD STATION
GRADE CROSSING	RAILROAD STATION
UNDERPASS HIGHWAY BELOW	RAILROAD STATION
OVERPASS HIGHWAY ABOVE	RAILROAD STATION
	RAILROAD STATION
AIRWAYS	RAILROAD STATION
MILITARY FIELD	RAILROAD STATION
COMMERCIAL OR MARSHAL FIELD	RAILROAD STATION
COMPLETE FACILITIES	RAILROAD STATION
LANDING AREA OR STRIP	RAILROAD STATION
SEALED	RAILROAD STATION
ARMY LIGHT BEACON-GENERAL	RAILROAD STATION
RAILROAD STATION	RAILROAD STATION
	RAILROAD STATION
STRUCTURES	RAILROAD STATION
GENERAL SYMBOLS (over 20' apart)	RAILROAD STATION
HONEY BRIDGE	RAILROAD STATION
SMALL BRIDGE (CLOSELY SPACED)	RAILROAD STATION
DRAMBRIDGE	RAILROAD STATION
GENERAL SYMBOL (OVER ROAD AND RIVER)	RAILROAD STATION
GENERAL	RAILROAD STATION
DRAMBRIDGE	RAILROAD STATION
ARCH	RAILROAD STATION
TRUSS	RAILROAD STATION
RESTRICTION BRIDGE	RAILROAD STATION
DAW WITH ROAD (LARGE SCALE)	RAILROAD STATION
DAW WITH ROAD (SMALL SCALE)	RAILROAD STATION
DAW WITHOUT ROAD (LARGE SCALE)	RAILROAD STATION
DAW WITHOUT ROAD (SMALL SCALE)	RAILROAD STATION
LEVELS ON SIDE	RAILROAD STATION
LEVELS ON SIDE WITH ROAD	RAILROAD STATION
WOOD STRUCTURES TO 20' BRIDGE	RAILROAD STATION
CONCRETE FORD OR SIP	RAILROAD STATION
FORD - ROAD ESTABLISHED	RAILROAD STATION
	RAILROAD STATION
BOUNDARIES	RAILROAD STATION
NATIONAL OR STATE	RAILROAD STATION
CITY	RAILROAD STATION
CONGRESSIONAL TOWNSHIP (U.S. LAND)	RAILROAD STATION
CONGRESSIONAL TOWNSHIP (STATE LAND)	RAILROAD STATION
SECTION LINE	RAILROAD STATION
CONGRESSIONAL AREA PREVIOUS TO 1850	RAILROAD STATION
STATE PATROL SUBSTATION	RAILROAD STATION
CONGRESSIONAL AREA PREVIOUS TO 1850	RAILROAD STATION
NATIONAL OR STATE PARK	RAILROAD STATION
NATIONAL OR STATE FOREST	RAILROAD STATION
INDIAN RESERVATION	RAILROAD STATION
SAME REFUGE	RAILROAD STATION
ABANDONED RAILROAD	RAILROAD STATION
RAILROAD MANAGEMENT AREA STATION	RAILROAD STATION
RAILROAD MANAGEMENT AREA STATION	RAILROAD STATION
WITH LINE BETWEEN ADJOINING SHEETS	RAILROAD STATION
OF THE SAME COUNTY	RAILROAD STATION
	RAILROAD STATION
DRAINAGE	RAILROAD STATION
INTERMITTENT STREAM	RAILROAD STATION
RIVE STREAM	RAILROAD STATION
WATER IN DAMMED LAKE	RAILROAD STATION
DRAINAGE STATION	RAILROAD STATION
LAKE OR POOD	RAILROAD STATION
	RAILROAD STATION

TRAFFIC VOLUMES ARE SUBJECT TO VARIABILITY AND CONSTRUCTION EFFECTS

FOR MORE INFO VISIT:

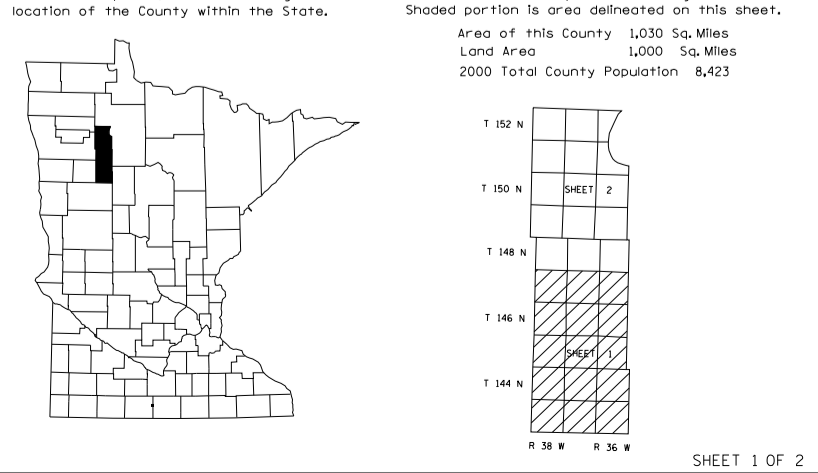
<http://www.dot.state.mn.us/traffic/data/html/aadt.html>



VOLUMES PREPARED BY THE OFFICE OF TRANSPORTATION DATA & ANALYSIS

NUMERALS INDICATE AVERAGE DAILY TRAFFIC VOLUMES ON DESIGNATED ROADS. TRUNK HIGHWAY ROUTES ARE 2009 A.A.D.T. VOLUMES

FOR DESIGNATED ROADS :
/ = SEGMENT ENDPOINT FOR ALL ROADS INTERSECTED BY HATCH
(= SEGMENT ENDPOINT ONLY FOR ROAD SEPARATED FROM INTERSECTING ROAD BY ARC



NOTE: ALL FEATURES EXCEPT TOWNSHIP ROADS AND CULTURE ARE CURRENT AS OF JANUARY 1, 2009.
NOTE: FOR DETAIL OF COUNTY STATE AID HIGHWAYS AND COUNTY ROADS IN INCORPORATED PLACES, SEE MAPS OF MUNICIPALITIES.