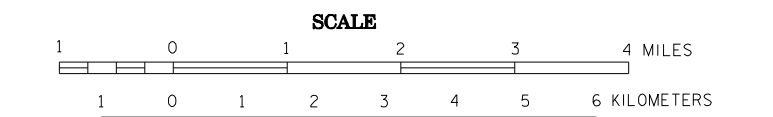


2009 TH VOLUMES GENERAL HIGHWAY MAP REDWOOD COUNTY MINNESOTA

PREPARED BY THE
MINNESOTA DEPARTMENT OF TRANSPORTATION
OFFICE OF TRANSPORTATION DATA & ANALYSIS
IN COOPERATION WITH
U.S. DEPARTMENT OF TRANSPORTATION
FEDERAL HIGHWAY ADMINISTRATION



2009
BASIC DATA - 1977*

Projection:
Minnesota Coordinate System
South Zone
Lambert Conformal Conic

North American Datum
of 1983



LEGEND

ROAD AND ROADWAY FEATURES	NAVIGATION
PROPOSED ROAD	BASE LINES ON NATURAL STREAMS
UNIMPROVED ROAD	SHIP LINES ON INLAND LAKES
GRAVEL AND GRAVEL ROAD	DOCK PIER OR LANDING
SOIL SURFACE ROAD	NAVIGABLE STREAM
GRAVEL OR STONE ROAD	DAM WITH LOCK
BEACHING ROAD	LANDMARK LIGHT BEACON
PAVED ROAD	LIGHTHOUSE
GRAVEL ROAD	
TRUNK HIGHWAY UNDER CONSTRUCTION	
ROADS IN UNINCORPORATED PLACES	
POINTS BETWEEN WHICH DISTANCES ARE MEASURED INDICATED THERE	
GRADE SEPARATION	
FULL TRAFFIC INTERCHANGE	
PARTIAL TRAFFIC INTERCHANGES INDICATING TRAFFIC MOVEMENT	
ROAD SYSTEM DESIGNATIONS	CONSERVATION
INTERSTATE TRUNK HIGHWAY	FOREST RANGER STATION
U.S. NUMBERED TRUNK HIGHWAY	LAND PERMANENTLY OCCUPIED
STATE NUMBERED TRUNK HIGHWAY	STATE PRESERVE
COUNTY STATE AID HIGHWAY	SEPARATION OF LANDS UNDER FEDERAL MANAGEMENT
COUNTY ROAD	PROMINENT ELEVATION
COUNTY STATE AID IN COLLEGIATE COUNTY	MANICURED LAWN
STATE STREET ROAD	WATER RESERVE
STATE PARK ROAD	PUBLIC ACCESS POINT
RAILROADS	RECREATION
RAILROADS (ANY NUMBER OF TRACKS) BY A SINGLE OPERATING COMPANY OR BY TRAINS OF ANOTHER COMPANY UNDER TRUCKS	GOLF COURSE OR COUNTRY CLUB
RAILROADS IN JURISDICTION OF TWO OR MORE COMPANIES OR SEPARATELY OPERATED COMPANIES	ATHLETIC FIELD
RAILROAD STATION	MINERAL SPRING
GRADE CROSSING	POND
UNIMPROVED HIGHWAY BRIDGE	BATHING BEACH OR SWIMMING POOL
OVERPASS HIGHWAY ABOVE	CAMP SITE
AIRWAYS	FARM AND DWELLING UNITS
MILITARY FIELD	FARM UNIT
COMMERCIAL OR MUNICIPAL FIELD	BARNS OR SHEDS OTHER THAN FARM
COMPLETE FACILITIES	WORKERS' HOMES, ETC.
LIMITED FACILITIES	SEASONAL DWELLING
LANDING AREA OR STRIP	HOME OR GROUP OF BUILDINGS CLOSELY SPACED
SEAPLANE BASE	NUMBER OF HOUSES IN EACH UNIT
AIRWAY LIGHT BEACON/GENERAL	INDICATES NUMBER OF EACH UNIT
RADIO RANGE STATION	INDICATES LOCATION OF EACH UNIT
STRUCTURES	INDUSTRIAL
General of Symbols (over 20' span)	FACTORY OR INDUSTRIAL PLANT
HONEYCOMB	STORAGE TANKS, OIL OR GAS
SMALL BRIDGES (CLOSELY SPACED)	BEET SUMP
SHARPCORNER	STOCKING FEEDLOT
General of Symbols (200' span and over)	WEEKLY, DAILY, OR CHEESE FACTORY
GENERAL	WAREHOUSE
SHARPCORNER	
ARCH	
TRUSS	
THE MORE TALL IS KEYS WHEN APPLICABLE	
Other Structures	
PROJECTION BRIDGE	
DAM WITH ROAD (SMALL SCALE)	
DAM WITHOUT ROAD (SMALL SCALE)	
LEVEL OR SIDE	
LEVEL OR SIDE WITH ROAD	
WORK STRUCTURES 10 TO 20' SPAN	
CONCRETE FORD OR DIP	
FORD - ROAD ESTABLISHED	
BOUNDARIES	PUBLIC SERVICE FACILITIES
NATIONAL OR STATE	POST OFFICE
COUNTY	FIRE STATION
CITY	MUSEUM
CONGRESSIONAL TOWNSHIP (S.W. LAND)	PUBLIC LIBRARY
SECTION LINE	PARKING PORT OF ENTRY
CONGRESSIONAL TOWNSHIP (S.W. LAND)	RADIO STATION
CONGRESSIONAL TOWNSHIP (S.W. LAND)	NATIONAL HOME
CONGRESSIONAL TOWNSHIP (S.W. LAND)	HOSPITAL
CONGRESSIONAL TOWNSHIP (S.W. LAND)	CORRECTIONAL INSTITUTION
CONGRESSIONAL TOWNSHIP (S.W. LAND)	
BOUNDARIES	CITY CENTERS
NATIONAL OR STATE PARK	STATE CAPITAL
NATIONAL OR STATE FOREST	CITY CENTER
INDIAN RESERVATION	INCORPORATED CITY (GENERALIZED)
GAME RESERVE	
ARMORY	
MILITARY MANICURED AREA (STATES OR WATERING AREA FEDERAL)	
WATERING AREA FEDERAL	
WATERING AREA FEDERAL	
DRAINAGE	MISCELLANEOUS MAP FEATURES
INTERMITTENT STREAM	CHAPEL, OTHER RELIGIOUS INSTITUTIONS
WIDE STREAM	COURT
WATER OR SWAMP LAND	CHURCH WITH IDENTITY ADJACENT
DRAINAGE BASIN	PANORAMIC VIEW COURSE, PEEPING POST
LAKE OR POND	MINOR TOWN
	GRAND PPT
	SANITARY LAND OR WASTE TREATMENT
	SOIL METAL JUMP
	SOIL METAL JUMP
	STATE PATROL SUBSTATION
	DEPARTMENT OF TRANSPORTATION DISTRICT OFFICE
	FULL HOUSE STATE POST OF ENTRY OR
	WATER STATION
	VALVE HOUSE
	NATURAL GAS PETROLEUM PRODUCTS
	CRUDE OIL OR WATER
	GASOLINE OR PETROLEUM PRODUCTS
	NATURAL GAS PETROLEUM PRODUCTS
	PIPELINE, NATURAL GAS
	PIPELINE, PETROLEUM PRODUCTS
	PIPELINE, CRUDE OIL
	TRANSMISSION LINE (DAM OR OVER)
	POWER PLANT (ELECTRICITY)
	TRANSMISSION STATION
	LONGITUDE AND LATITUDE INTERSECTION
	NOTICE: STATES IN NATIONAL
	OPEN TO THE PUBLIC

VOLUMES PREPARED BY
THE OFFICE OF
TRANSPORTATION DATA & ANALYSIS

NUMERALS INDICATE AVERAGE DAILY
TRAFFIC VOLUMES ON DESIGNATED ROADS.

TRUNK HIGHWAY ROUTES ARE 2009 A.A.D.T. VOLUMES

TRAFFIC VOLUMES ARE SUBJECT TO VARIABILITY AND CONSTRUCTION EFFECTS

FOR MORE INFO VISIT: <http://www.dot.state.mn.us/traffic/data/html/aadt.html>

FOR DESIGNATED ROADS :
// = SEGMENT ENDPOINT FOR ALL
ROADS INTERSECTED BY HATCH
(= SEGMENT ENDPOINT ONLY FOR
ROAD SEPARATED FROM INTERSECTING
ROAD BY ARC

*NOTE: ALL FEATURES EXCEPT TOWNSHIP ROADS AND
CULTURE ARE CURRENT AS OF JANUARY 1, 2009.

NOTE: FOR DETAIL OF COUNTY STATE AID HIGHWAYS AND COUNTY
ROADS IN INCORPORATED PLACES, SEE MAPS OF MUNICIPALITIES.

